

March Madness 2023 - Out of bounds sets

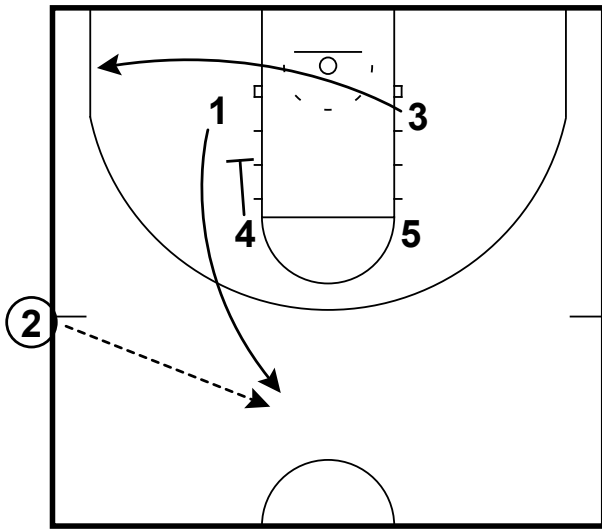
Table of Contents

1.	Out of bounds sets	3
1.1	SLOB	3
1.1.1	Auburn - SLOB - Zipper Iverson turnout	3
1.1.2	Creighton - SLOB line elevator	4
1.1.3	Indiana - SLOB - Back rip STS	5
1.1.4	Indiana - SLOB - Zipper through elbow back cut	6
1.1.5	Kansas - SLOB EOG - Zipper clear out ISO	7
1.1.6	Kansas - SLOB zipper single Iverson snap	8
1.1.7	Kennesaw State - SLOB - Zipper ricky	9
1.1.8	Maryland - SLOB - Line elevator	10
1.1.9	UCONN - SLOB - Stagger gut zoom	11
1.2	BLOB	12
1.2.1	Auburn - BLOB - 1-4 low lift back door	12
1.2.2	Baylor - BLOB choice STS	13
1.2.3	FDU - BLOB - Triple STS pop	14
1.2.4	Furman - BLOB 1-4 low Lift DHO	15
1.2.5	Gonzaga - BLOB - Box stagger away	16
1.2.6	Houston - BLOB - Turnout flare	17

March Madness 2023 - Out of bounds sets - Contents (cont.)		
1.2.7	Iona - BLOB - 4 high stagger zoom Spain	18
1.2.8	Kansas - BLOB 1-4 low flex seal	19
1.2.9	Kansas - BLOB 1-4 low zoom	20
1.2.10	Kansas State - BLOB - Lift stagger	21
1.2.11	Kennesaw State - BLOB - Stagger corner Spain	22
1.2.12	Kentucky - BLOB - Fake stagger exit	23
1.2.13	Maryland - BLOB - 1-4 low lft stagger ISO	24
1.2.14	Maryland -BLOB - 1-4 low stagger to gut zoom	25
1.2.15	Miami (Fl) - BLOB - Box rip stagger	26
1.2.16	Michigan State - BLOB - Box lift flex STS turnout	27
1.2.17	Mississippi State - BLOB - 1-4 low rip STS	28
1.2.18	Missouri - BLOB - Box high stack zipper cross seal	29
1.2.19	Missouri - BLOB - Push curl runner	30
1.2.20	Montana State - BLOB - 1-4 low lift Flare	31
1.2.21	NC State - BLOB - Rip STS lift hand-off	32
1.2.22	UCONN - BLOB - Triple twirl	33

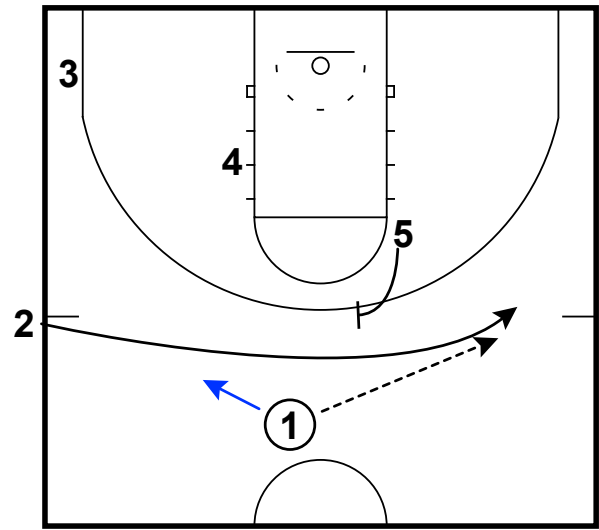
Auburn - SLOB - Zipper Iverson turnout

Frame 1



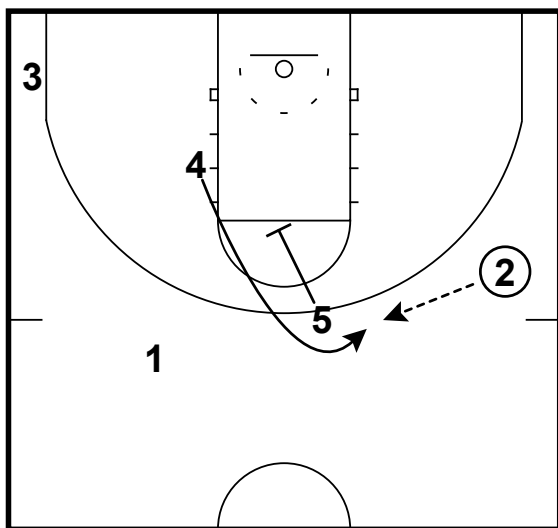
pass to zipper exit

Frame 2



pass to single Iverson cut

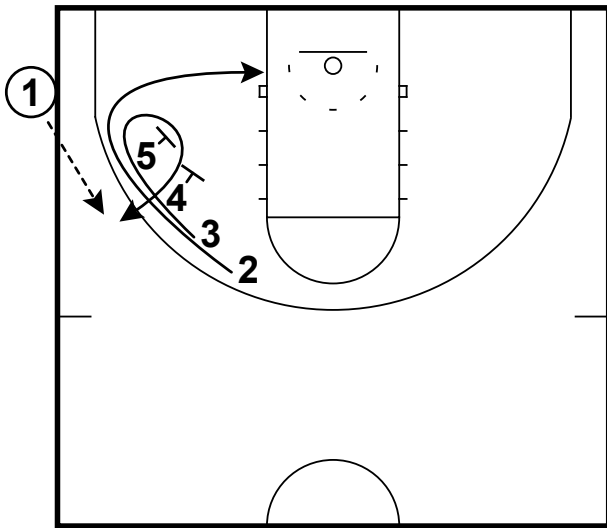
Frame 3



turnout

Creighton - SLOB line elevator

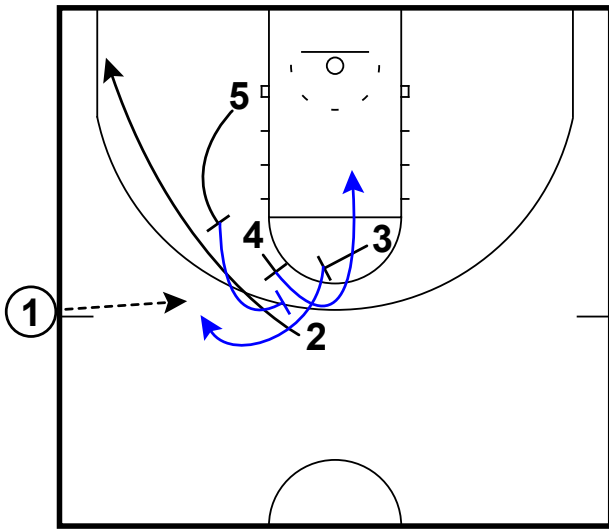
Frame 1



double curls combined with elevator

Indiana - SLOB - Back rip STS

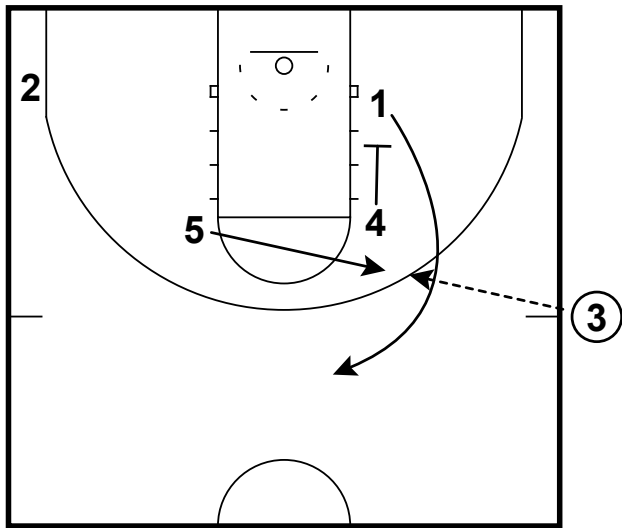
Frame 1



stagger for 2 (4-5), to back screen (3 to 4) & pass to STS exit (5 to 3)

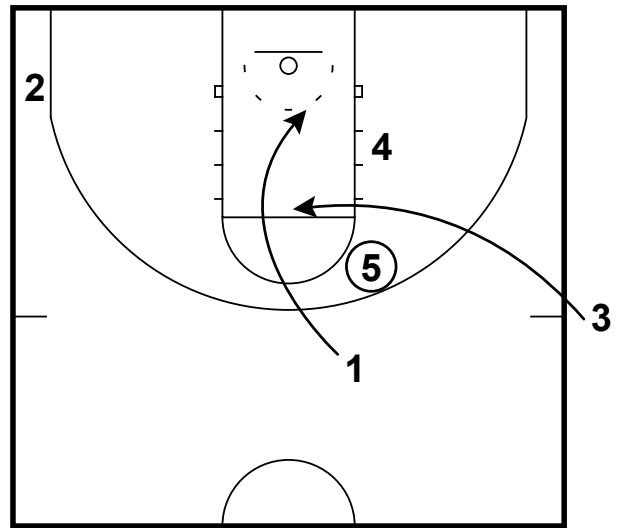
Indiana - SLOB - Zipper through elbow back cut

Frame 1



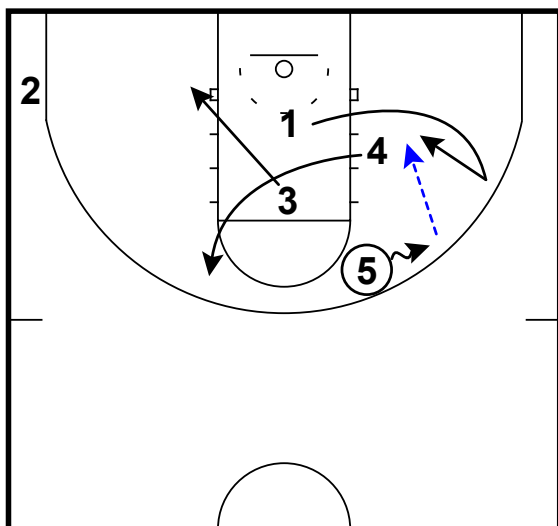
zipper pin & pass to elbow flash

Frame 2



keep & relocations

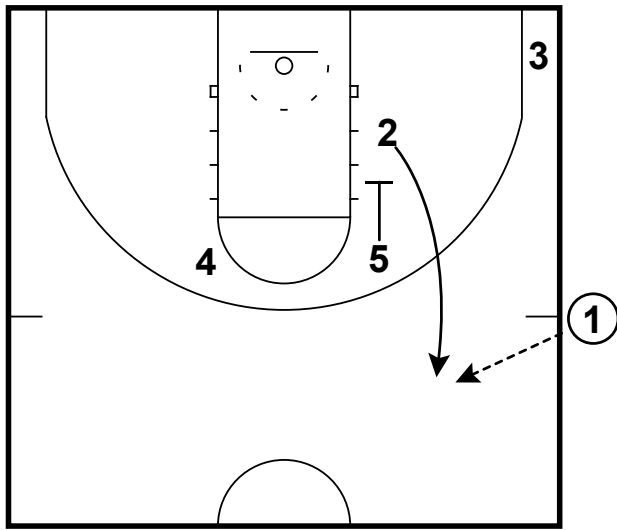
Frame 3



fake move to handoff & back cut

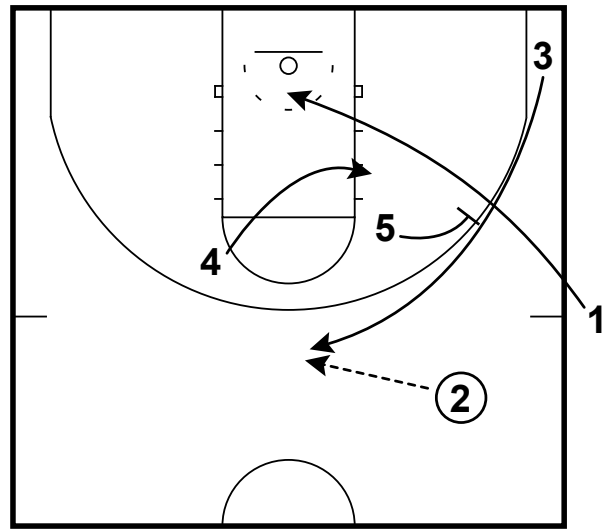
Kansas - SLOB EOG - Zipper clear out ISO

Frame 1



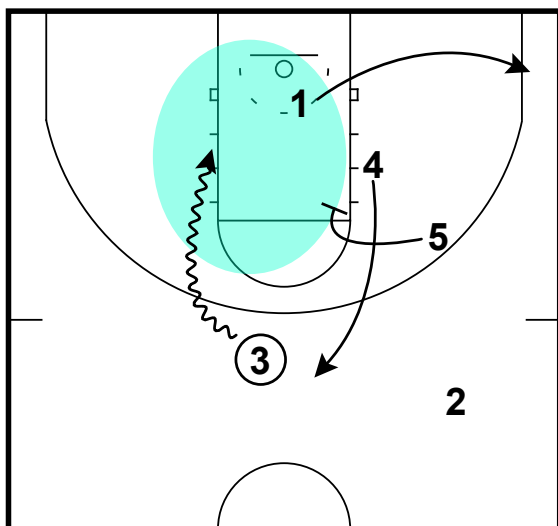
pass to zipper exit

Frame 2



pass to pin down exit & relocations

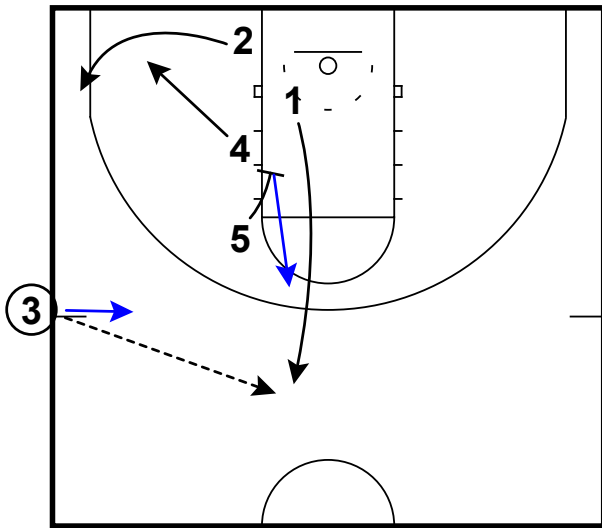
Frame 3



clear out & Iso attack

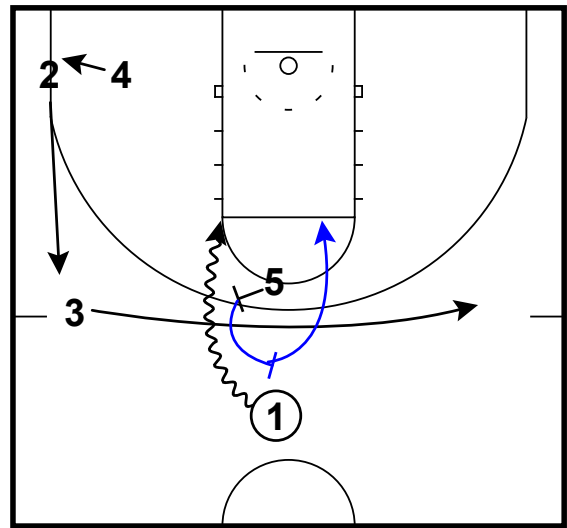
Kansas - SLOB zipper single Iverson snap

Frame 1



pass to coming off pin down & relocations

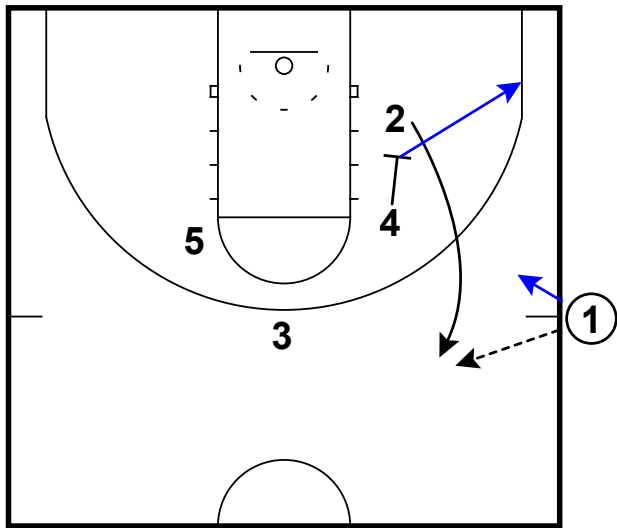
Frame 2



single Iverson screen & immediate Top PnR

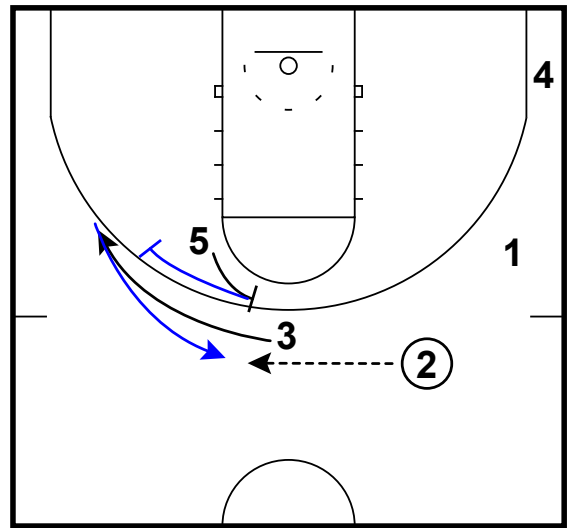
Kennesaw State - SLOB - Zipper ricky

Frame 1



pass to zipper exit

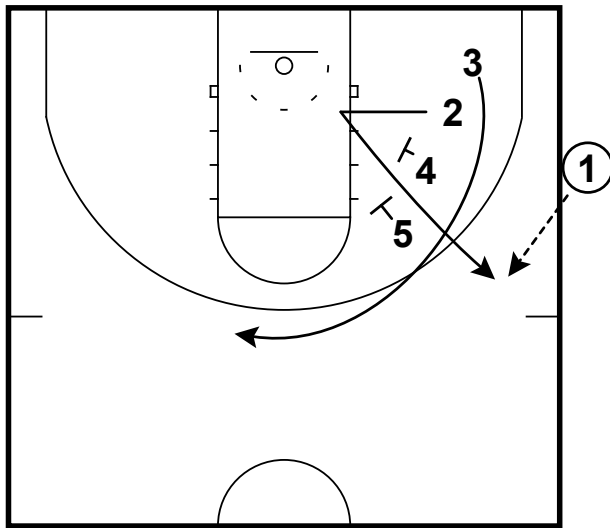
Frame 2



flare combined with immediate away screen (ricky)

Maryland - SLOB - Line elevator

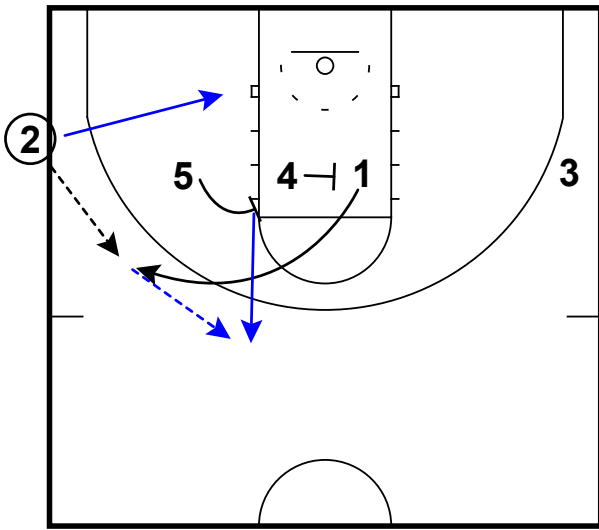
Frame 1



triple stagger to misdirection cut & elevator

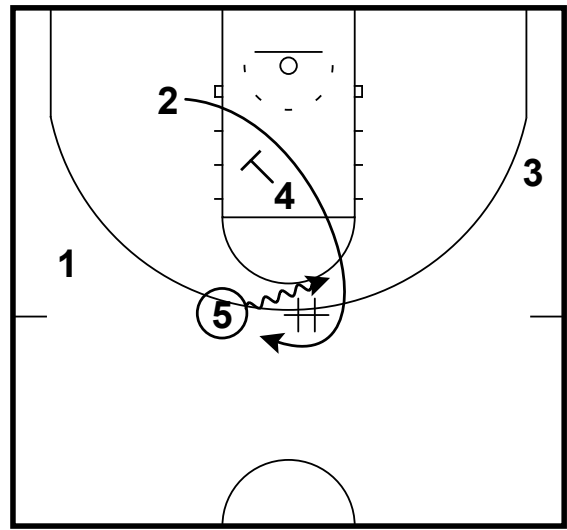
UCONN - SLOB - Stagger gut zoom

Frame 1



pass to stagger exit & then to slot

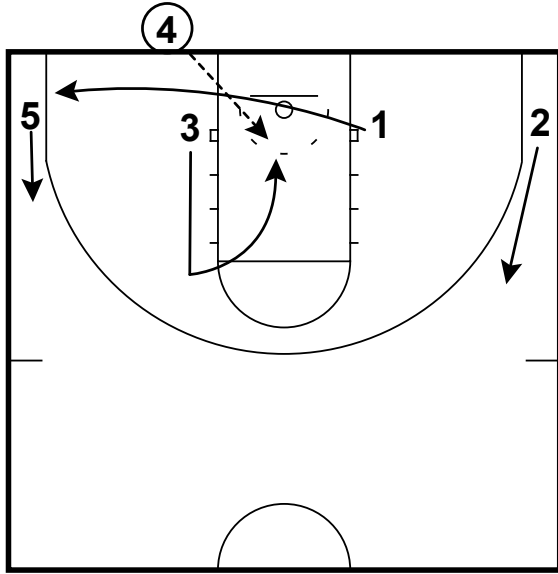
Frame 2



pin down & DHO (zoom)

Auburn - BLOB - 1-4 low lift back door

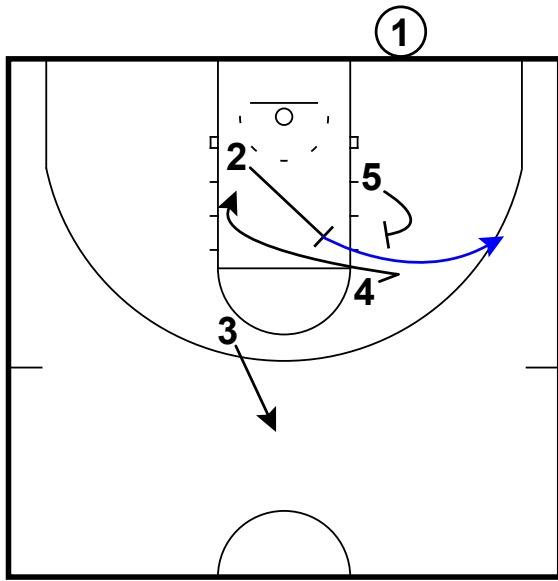
Frame 1



lift back door & empty paint

Baylor - BLOB choice STS

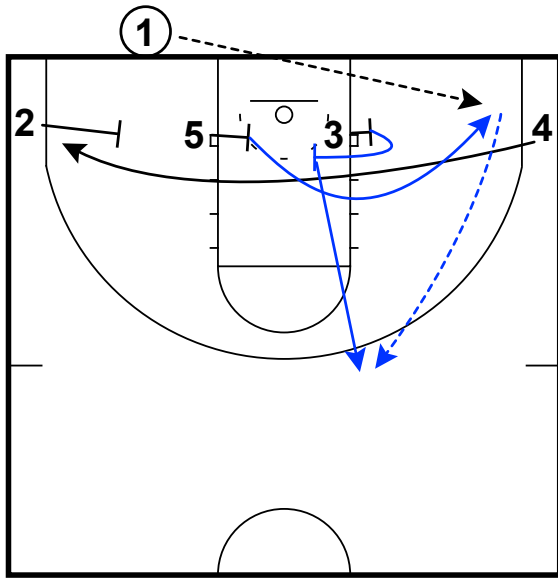
Frame 1



choice screen & STS

FDU - BLOB - Triple STS pop

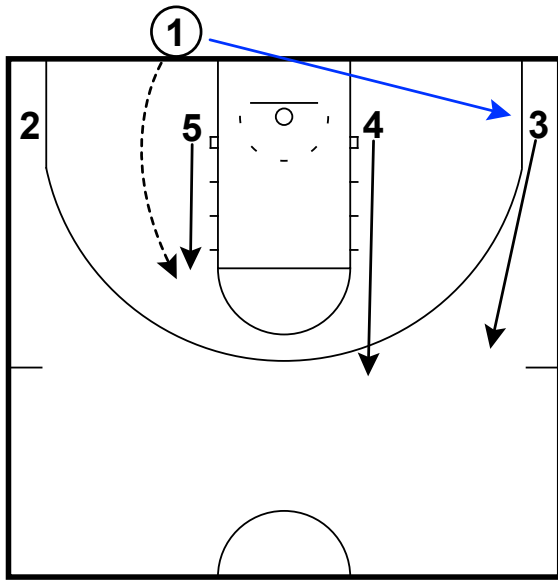
Frame 1



triple stagger (4), STS (3-5), pass to corner & pass to top

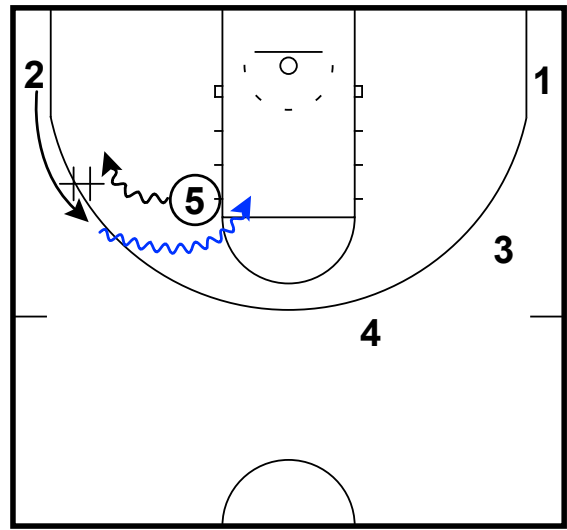
Furman - BLOB 1-4 low Lift DHO

Frame 1



pass to lift & relocations

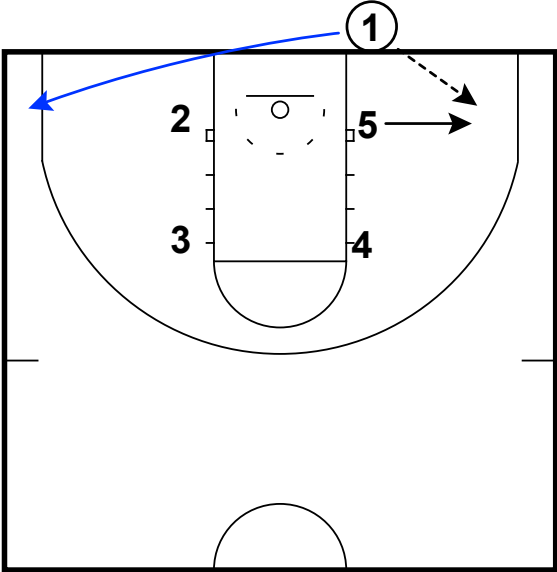
Frame 2



DHO & attack

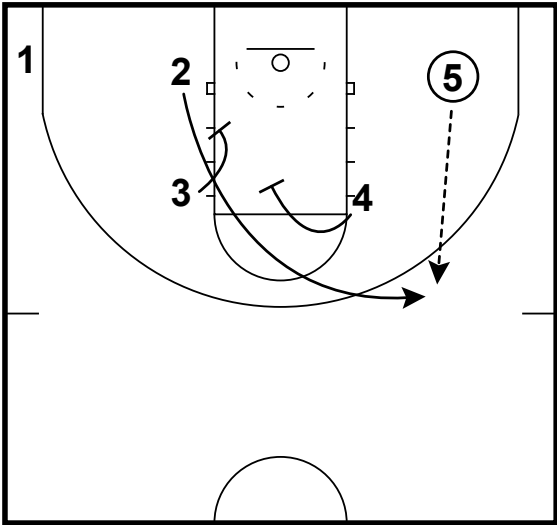
Gonzaga - BLOB - Box stagger away

Frame 1



pass to corner

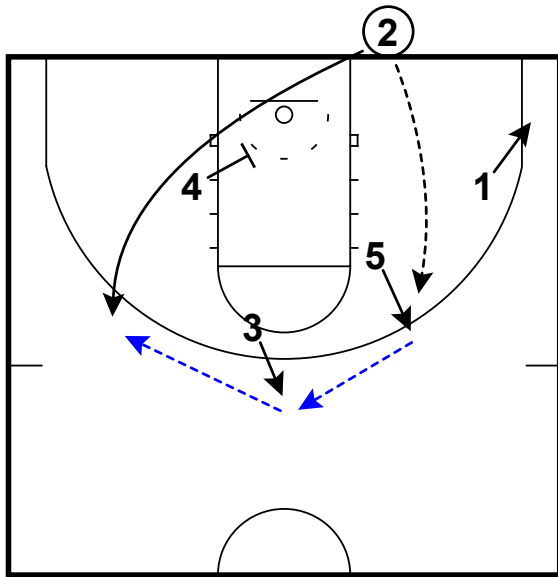
Frame 2



stagger away

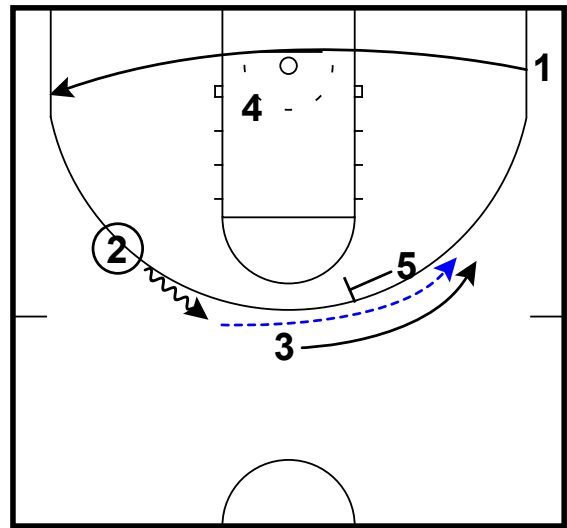
Houston - BLOB - Turnout flare

Frame 1



ball out & swing to coming off turnout

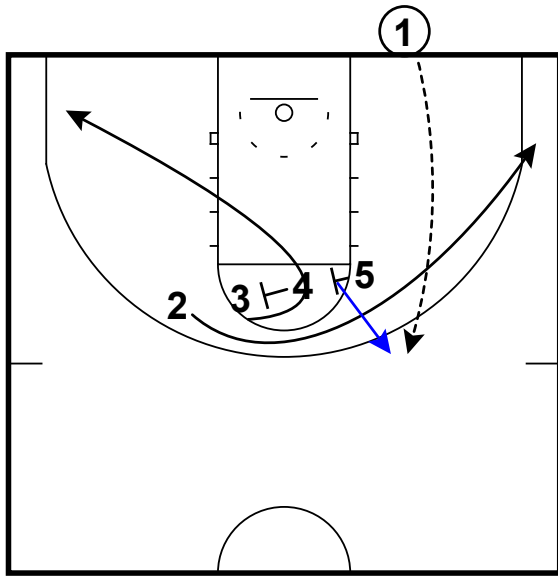
Frame 2



clear the corner & pass to flare action

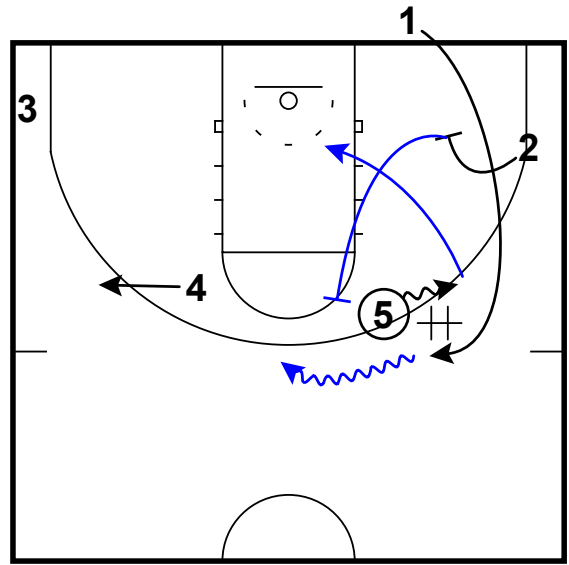
Iona - BLOB - 4 high stagger zoom Spain

Frame 1



high staggered & pass to slot

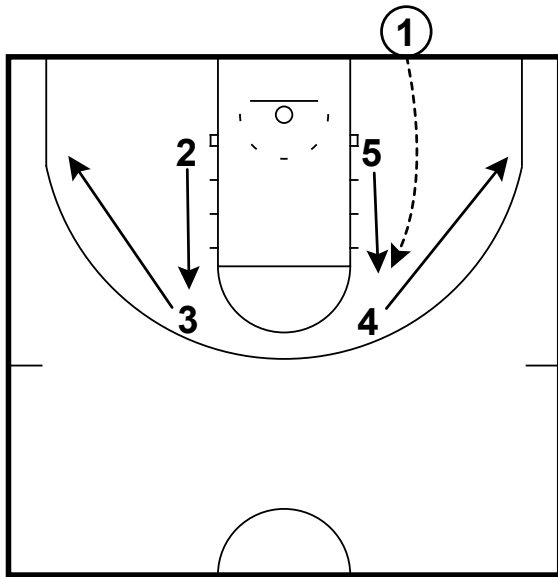
Frame 2



pin down & DHO (zoom) turned to top Spain PnR

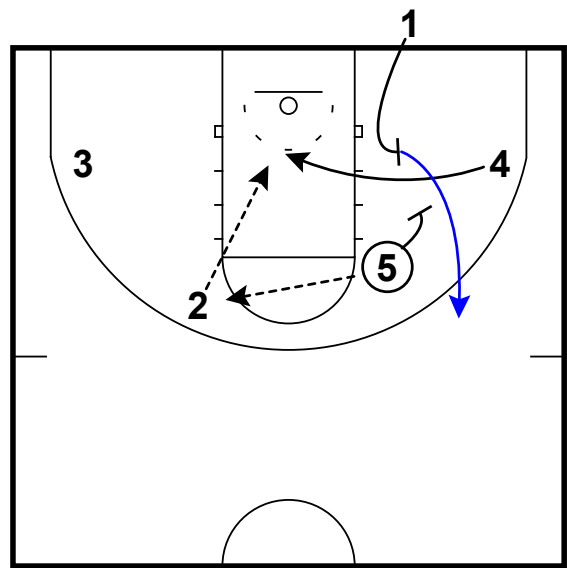
Kansas - BLOB 1-4 low flex seal

Frame 1



box to 1-4 formation & intro pass to elbow

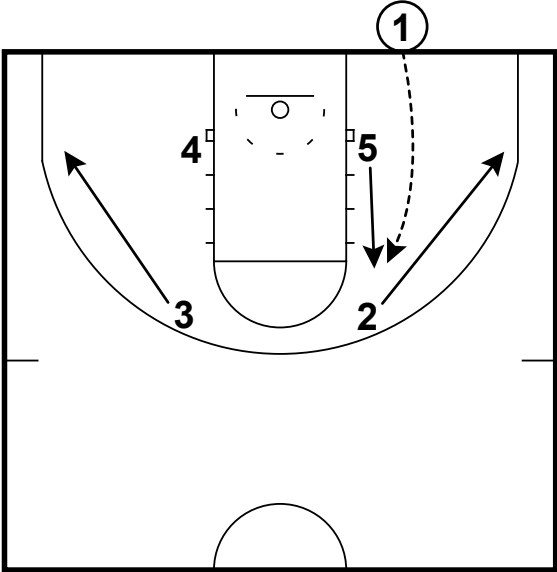
Frame 2



flex action & pass to seal

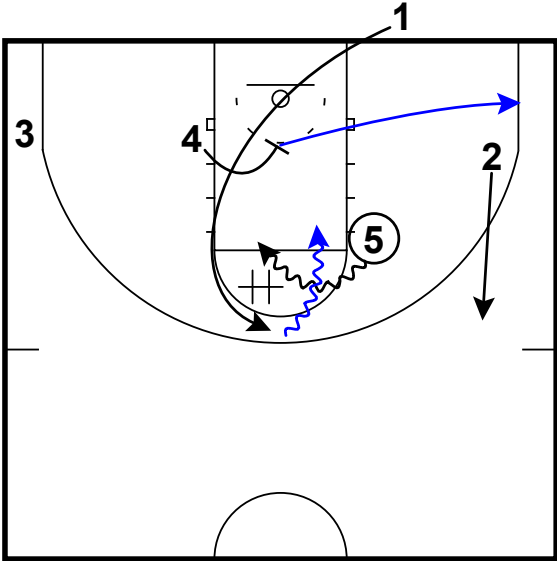
Kansas - BLOB 1-4 low zoom

Frame 1



box to 1-4 formation & intro pass to elbow

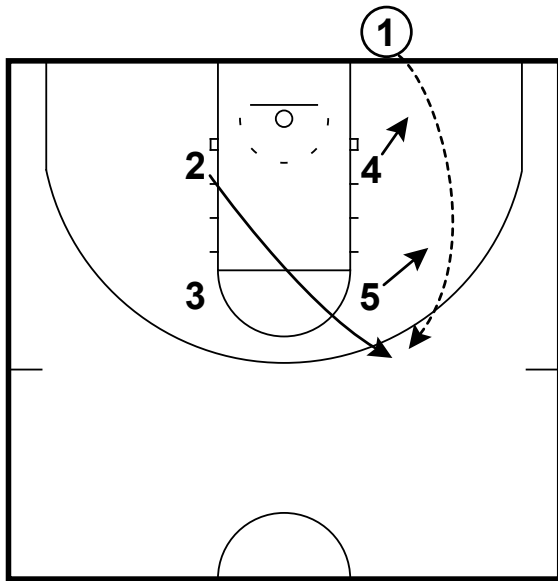
Frame 2



pin down / DHO (zoom) & attack with pass options in relocations

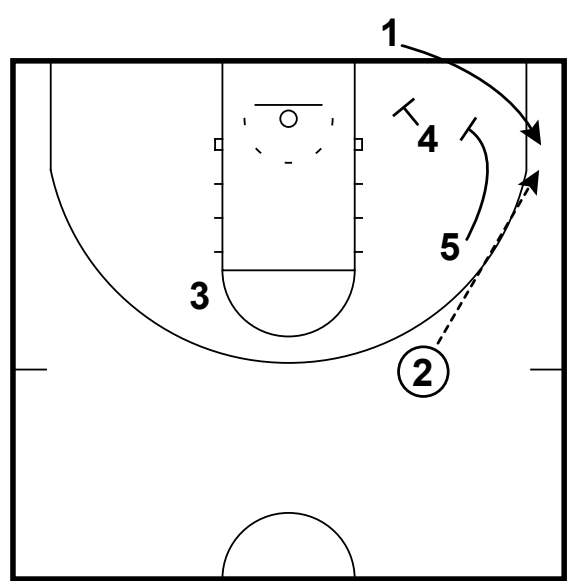
Kansas State - BLOB - Lift stagger

Frame 1



pass to perimeter shift

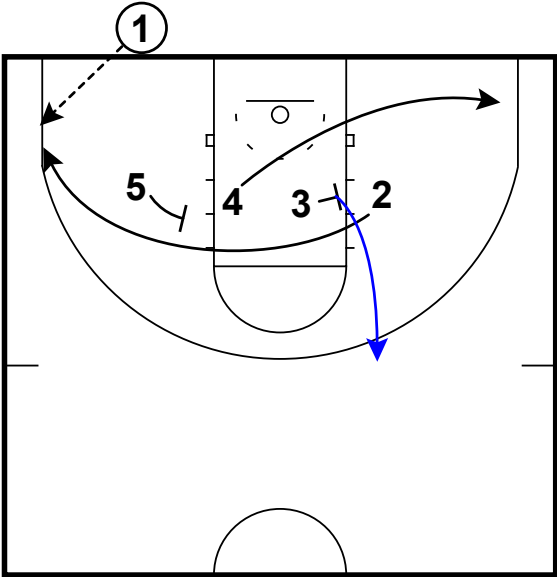
Frame 2



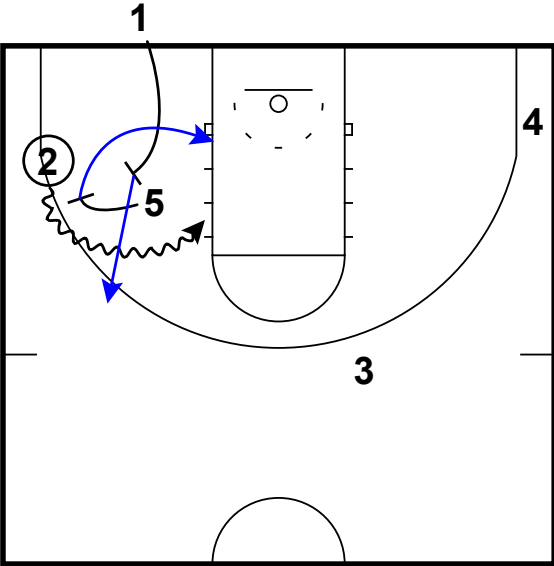
stagger

Kennesaw State - BLOB - Stagger corner Spain

Frame 1



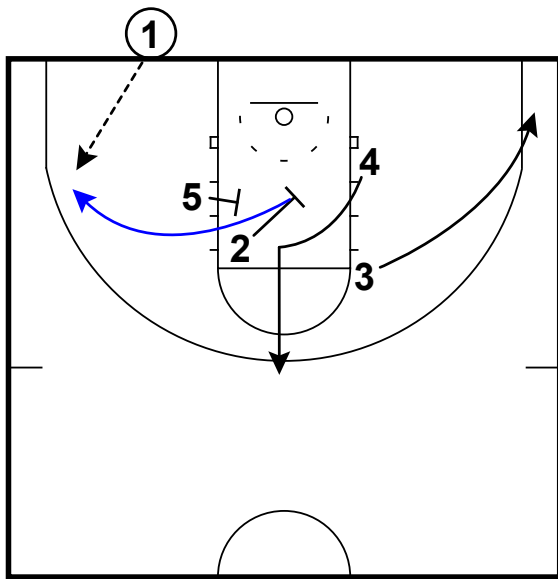
Frame 2



pass to stagger exit at corner

Kentucky - BLOB - Fake stagger exit

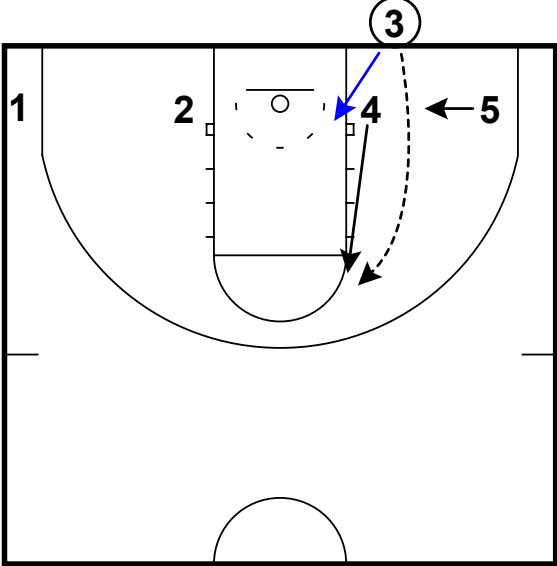
Frame 1



fake stagger for 4 exit lead to turnout
for 2

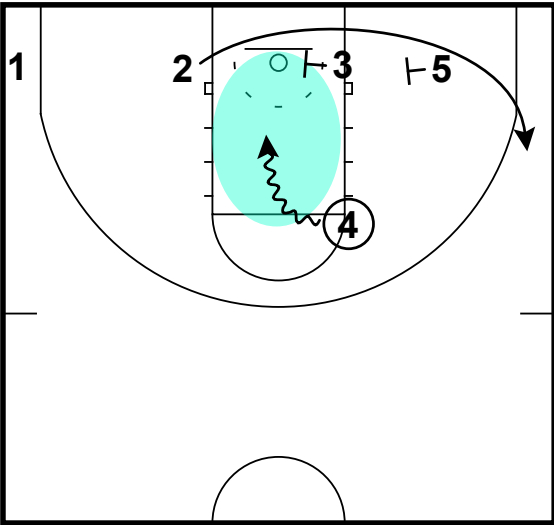
Maryland - BLOB - 1-4 low lft stagger ISO

Frame 1



pass to lift & relocations

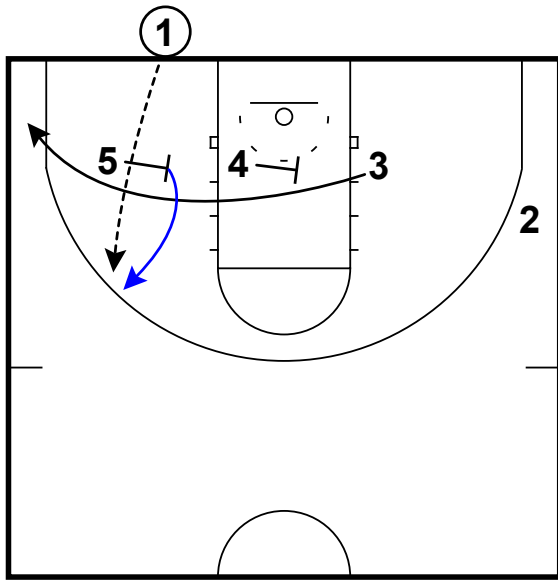
Frame 2



misdirection/fake stagger to Iso attack

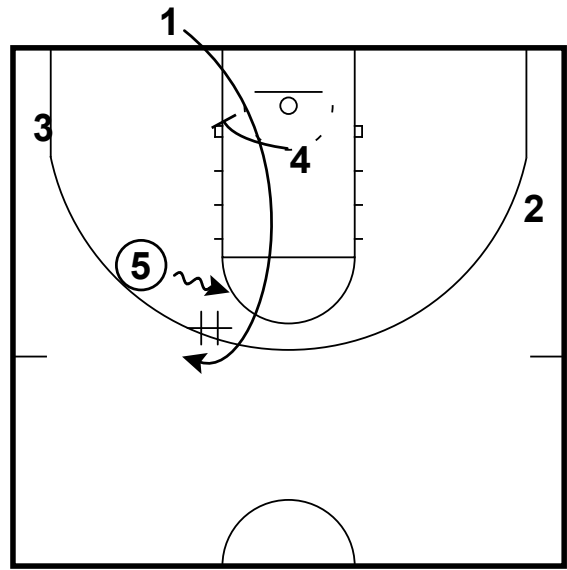
Maryland -BLOB - 1-4 low stagger to gut zoom

Frame 1



stagger exit & pass to big's lift

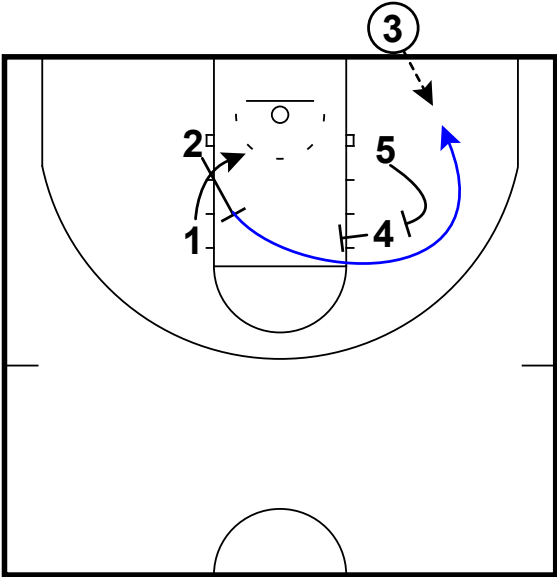
Frame 2



cutting through paint after pin down & DHO

Miami (FI) - BLOB - Box rip stagger

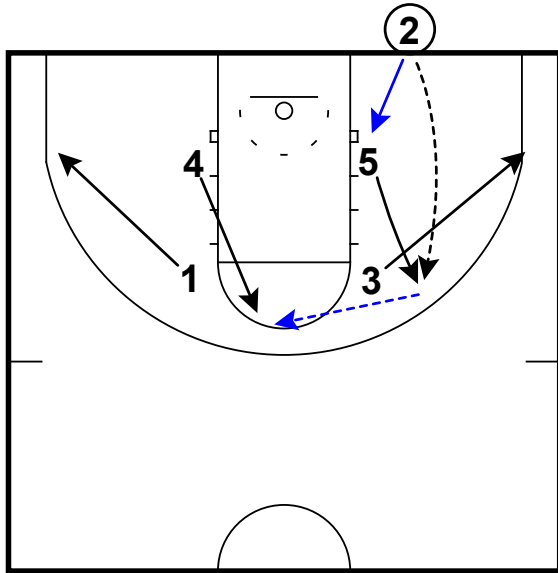
Frame 1



back screen to stagger turnout

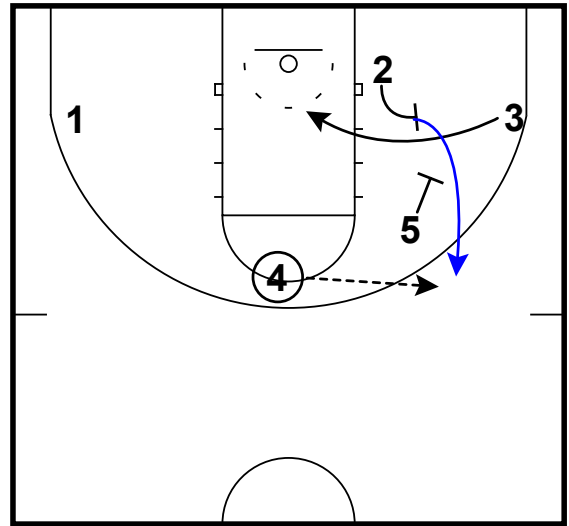
Michigan State - BLOB - Box lift flex STS turnout

Frame 1



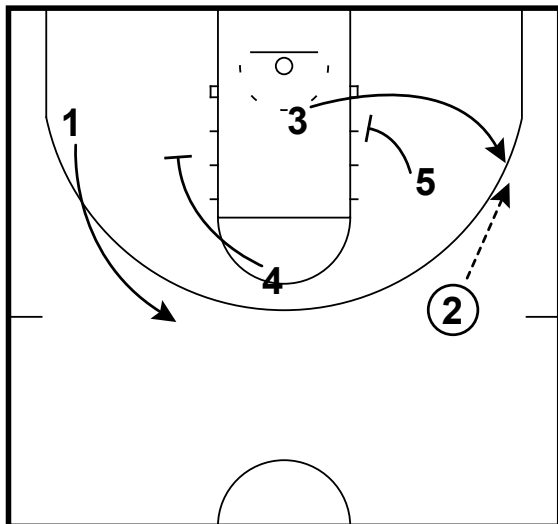
pass to lift & swing to slot

Frame 2



flex STS action & pass to exit

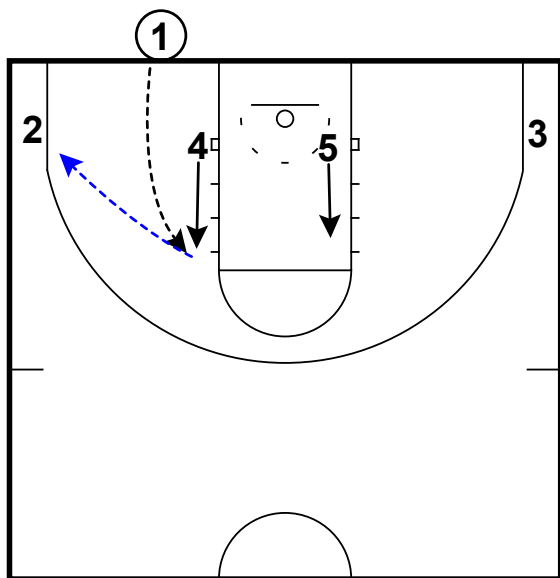
Frame 3



turnout

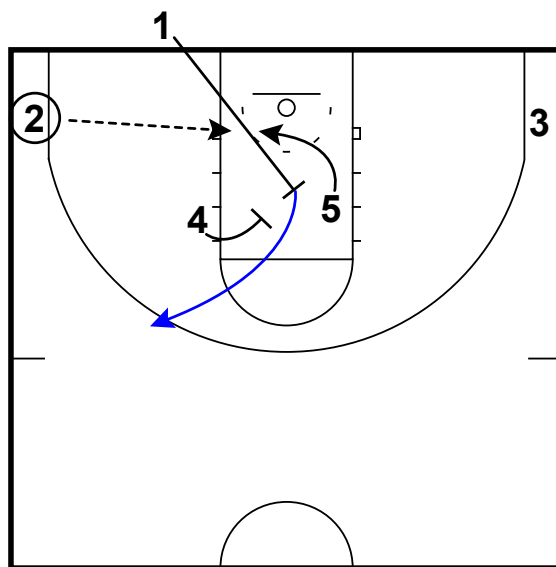
Mississippi State - BLOB - 1-4 low rip STS

Frame 1



pass to lift & pass to corner

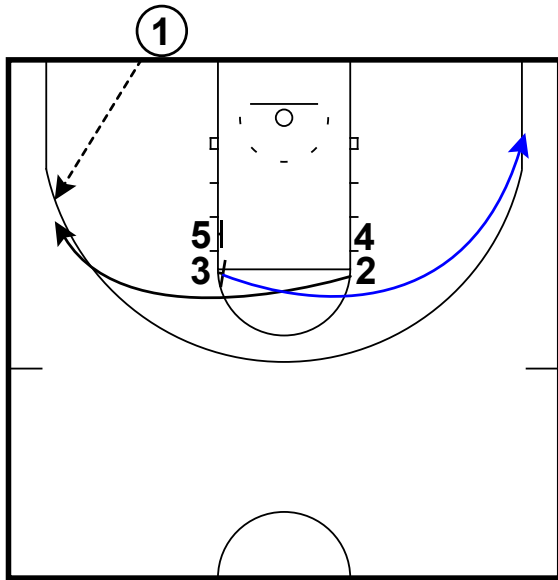
Frame 2



back screen & STS

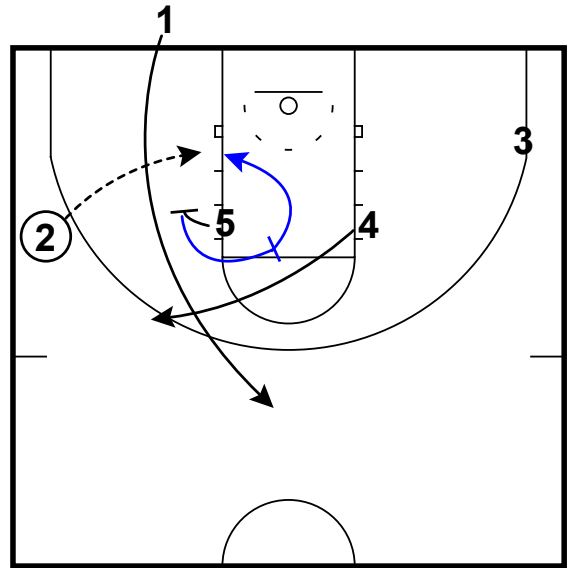
Missouri - BLOB - Box high stack zipper cross seal

Frame 1



pass to stack exit

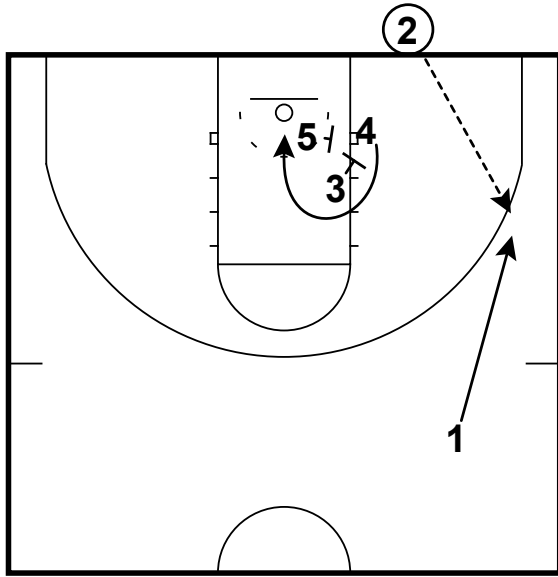
Frame 2



zipper pin, misdirection cross & seal inside for Iso

Missouri - BLOB - Push curl runner

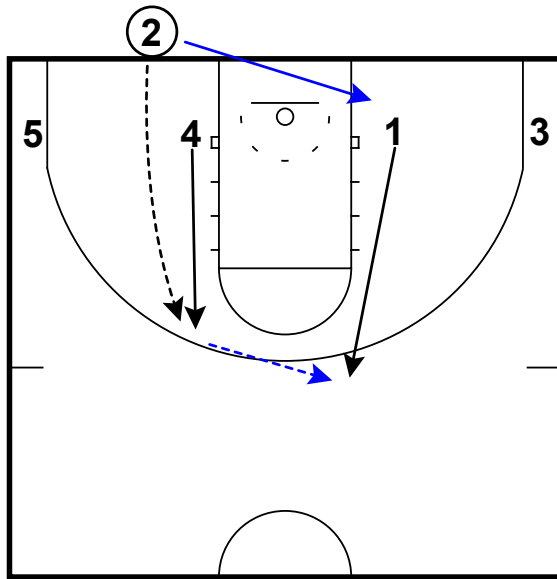
Frame 1



curl the push screen & runner (1) for catch & shoot

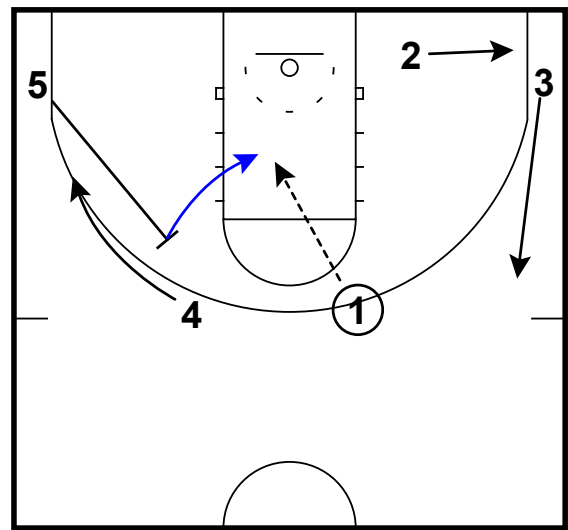
Montana State - BLOB - 1-4 low lift Flare

Frame 1



pass to lift & swing

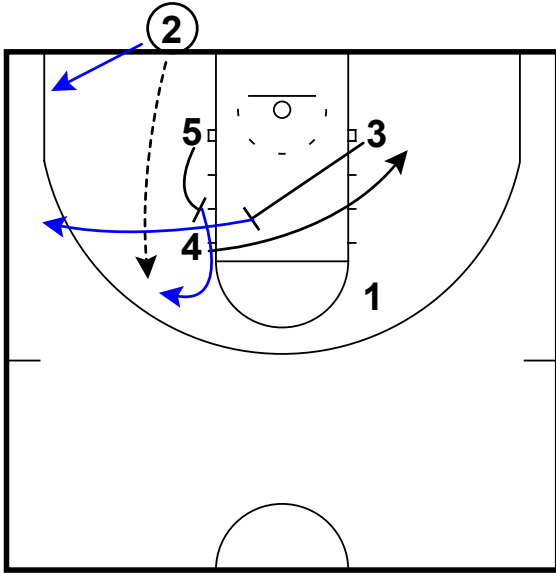
Frame 2



flare screen & flash inside

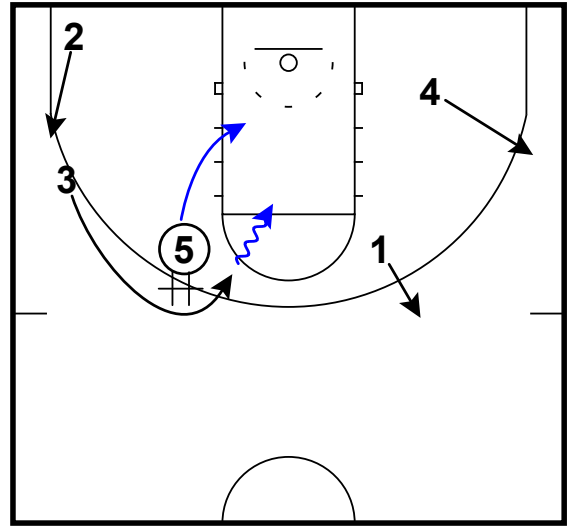
NC State - BLOB - Rip STS lift hand-off

Frame 1



back screen & STS, pass to lift

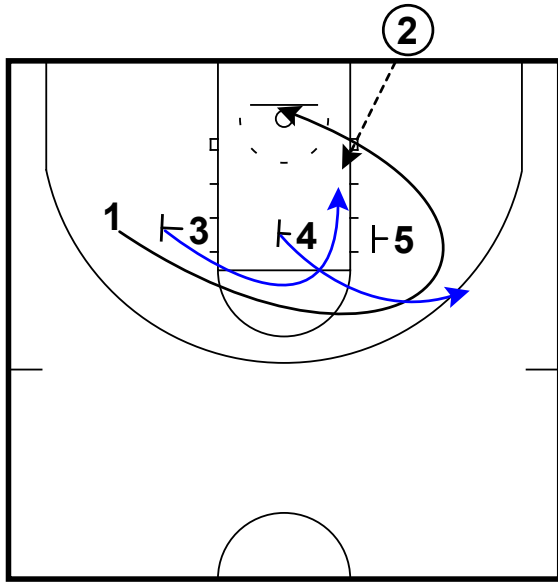
Frame 2



handoff & attack

UCONN - BLOB - Triple twirl

Frame 1



triple stagger & twirl the 2nd exit