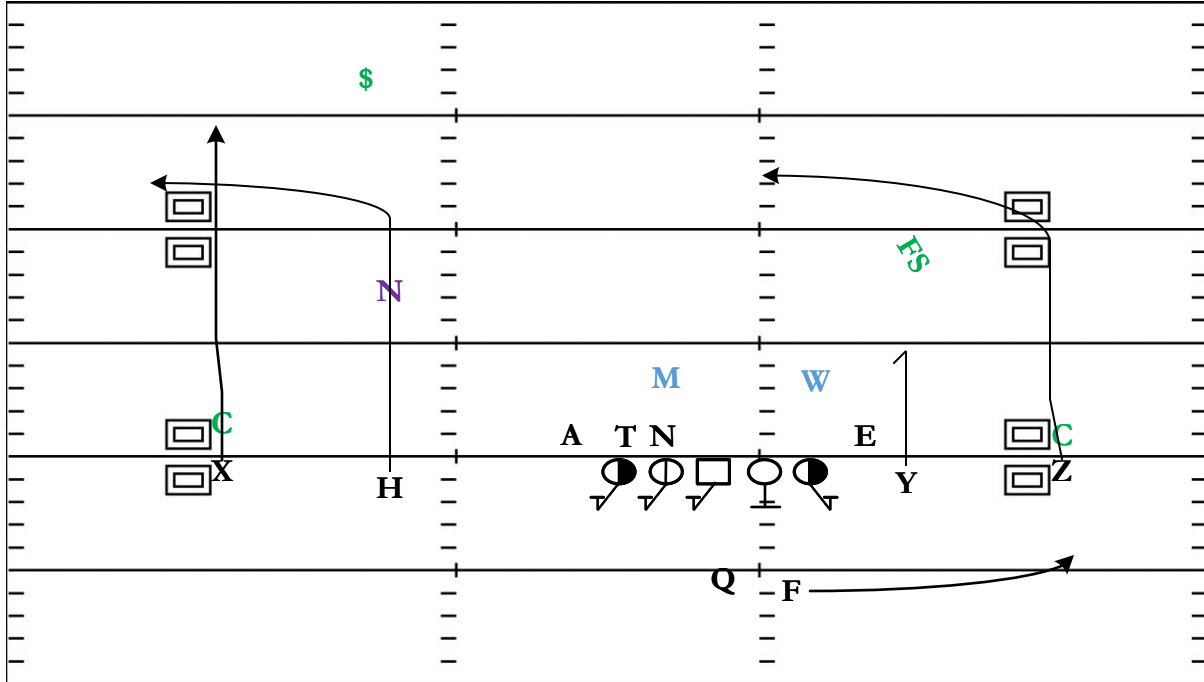


# 2x2 Open: Sail

QTR	TIME	D & D	YD LINE	HASH	SCORE
3rd	4:12	3 & 13	22	RM	27 - 21



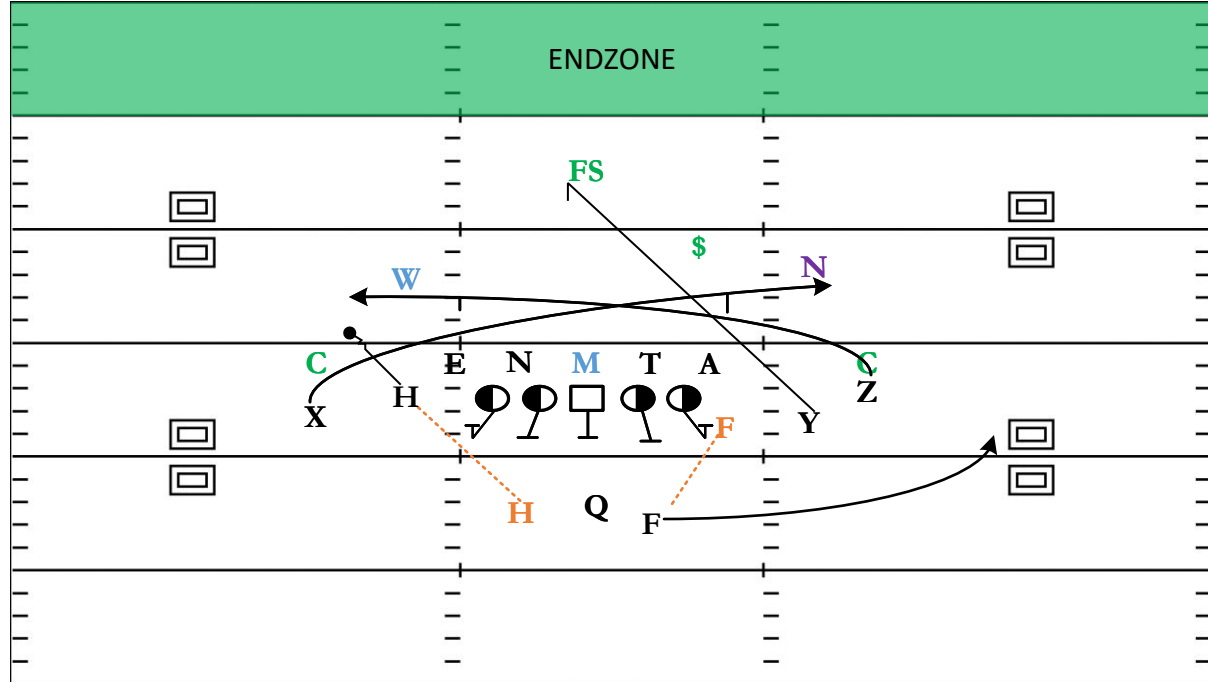
**STRATEGY:** Air Raid Staple that gives the USC offense the ability to attack the field with a Deep Out (Sail) or work back to the Boundary w/ a High-Low Read.

**QB READS & PROGRESSION:** Deep Out – High/Low Glance Hitch - Swing

<b>X</b>	MOR Vertical	<b>LT</b>	Slide Protect C-Gap
<b>H</b>	Deep Out	<b>LG</b>	Slide Protect B-Gap
<b>Y</b>	Short Hitch	<b>C</b>	Slide Protect A-Gap
<b>Z</b>	Glance Break In @ 10-12 Yards	<b>RG</b>	Dual Set If Will Drops help the Slide
<b>F</b>	Swing	<b>RT</b>	Man Protect Defensive End

# F-Ear/H-Out 2x2 Tite: Mesh

QTR	TIME	D & D	YD LINE	HASH	SCORE
1st	10:29	3 & 4	12	M	0 - 0



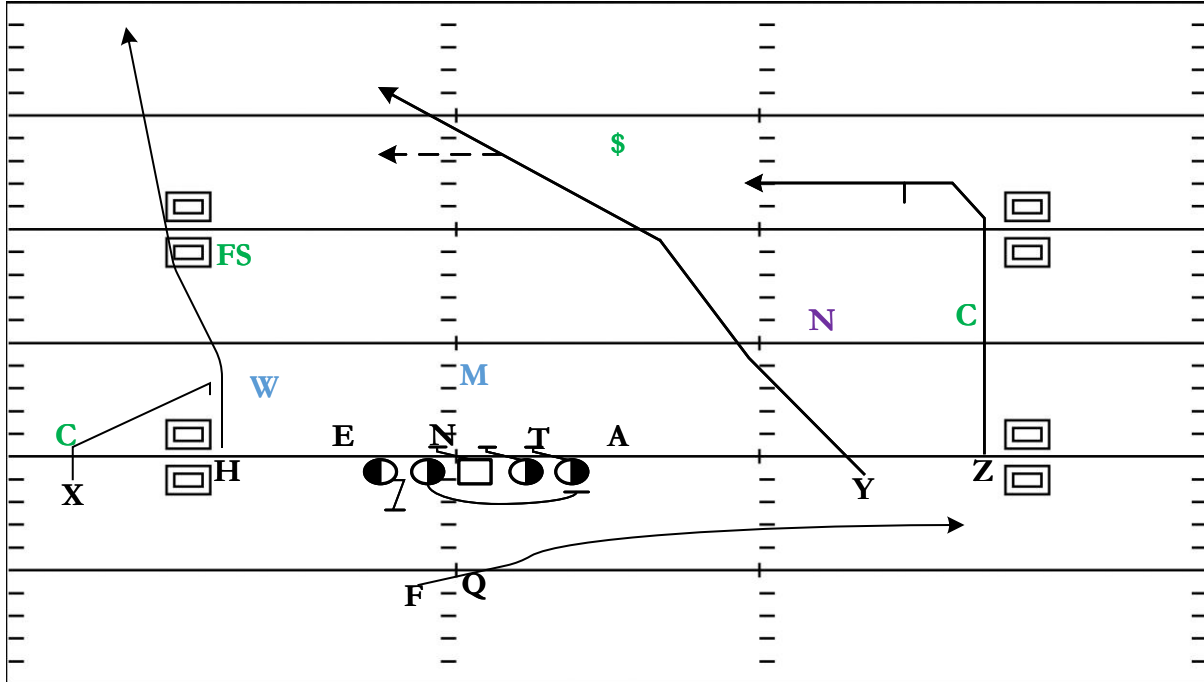
**STRATEGY:** The ultimate man beater as you attach a pick route to the Mesh concept, picking the corner that is in man coverage on the Under Mesh.

**QB READS & PROGRESSION:** Under Mesh – Spot – Over Mesh

<b>X</b>	Under Mesh Close the Distance of Mesh Run v. Man / Settle v. Zone	<b>LT</b>	Man Protect Defensive End
<b>H</b>	Shift Out Pick for Under Mesh	<b>LG</b>	Man Protect 3-Tech Nose
<b>Y</b>	Spot Set over the Center @ 5-6 Yards	<b>C</b>	Man Protect Mike Linebacker
<b>Z</b>	Over Mesh Set The Depth of the Mesh Run v. Man / Settle v. Zone	<b>RG</b>	Man Protect 3-Tech Tackle
<b>F</b>	Swing	<b>RT</b>	Man Protect Anchor

# 2x2 Open: PAP Y-Cross

QTR	TIME	D & D	YD LINE	HASH	SCORE
2nd	10:26	1 & 10	43	L	14 - 10



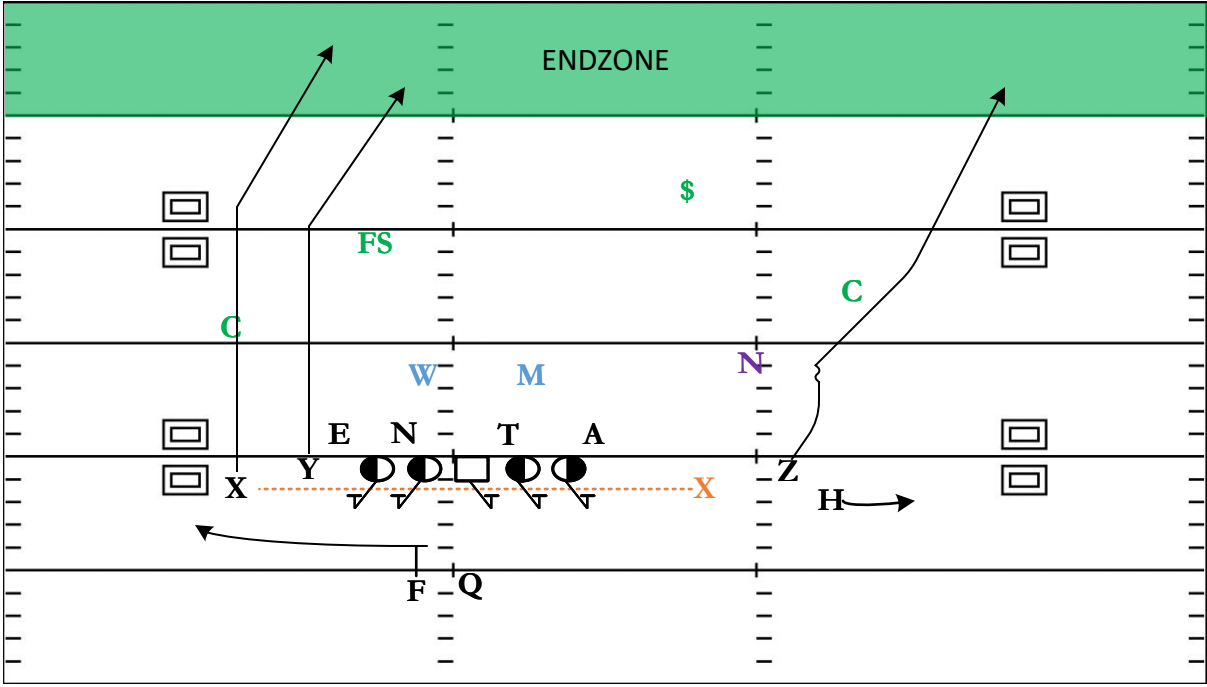
**STRATEGY:** Slight alteration on the Air Raid Classic Y-Cross, switching the two playside receivers areas that they are attacking, allowing the slot more grass on his slot-fade.

**QB READS & PROGRESSION:** Pre-Snap Decide on Slot-Fade / Spot – Cross – Post Curl – RB Checkdown  
**\*\*\*QB is able to bypass the playside (BND) and work directly to the Cross Side.**

<b>X</b>	Spot Press like slant & settle up	<b>LT</b>	B to Hinge
<b>H</b>	Slot Fade	<b>LG</b>	Protect Pull C-Gap
<b>Y</b>	Cross Under #1 / Over #2	<b>C</b>	Slide Protect To Backside Gap
<b>Z</b>	Post-Curl Settle v. Zone / Run v. Man	<b>RG</b>	Slide Protect To Backside Gap
<b>F</b>	Play-Fake w/ QB Checkdown Flat	<b>RT</b>	Slide Protect To Backside Gap

# X-Ap 2x2 Tite: DBL Post BS Sucker

QTR	TIME	D & D	YD LINE	HASH	SCORE
2nd	10:53	2 & 15	15	L	13 - 7



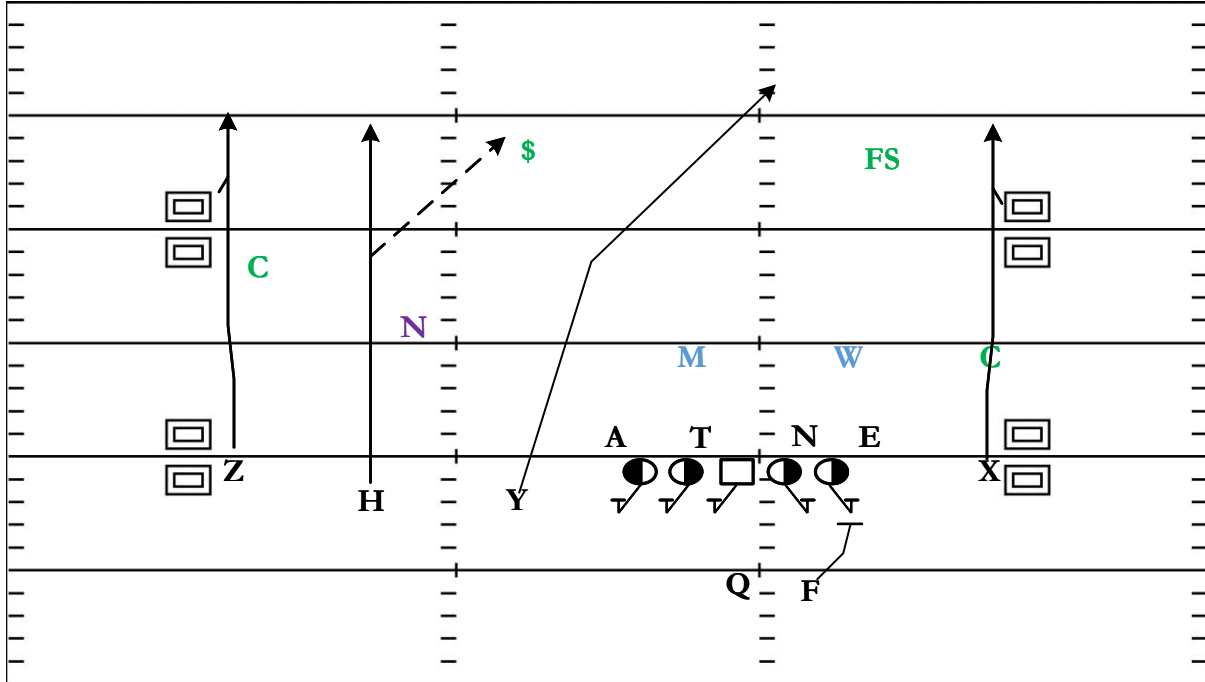
**STRATEGY:** Give the QB a Sucker Concept to the Field side if the defense makes it easy = Take it. If not work your DBL post as the Sucker pulls the \$ away opening up the Inside Post.

**QB READS & PROGRESSION:** Pre-Snap decide on Sucker – Inside Post – Outside Post - Swing

<b>X</b>	Outside Post	<b>LT</b>	Man Protect Defensive End
<b>H</b>	Distraction Bubble	<b>LG</b>	Man Protect 3-Tech Nose
<b>Y</b>	Inside Post	<b>C</b>	Slide Protect A-Gap
<b>Z</b>	Sell Blocking Sucker Release Fade	<b>RG</b>	Slide Protect B-Gap
<b>F</b>	Check Protect Will Swing	<b>RT</b>	Slide Protect C-Gap

# 3x1 Open: Four Verts

QTR	TIME	D & D	YD LINE	HASH	SCORE
3rd	11:43	2 & 9	-37	R	22 - 14



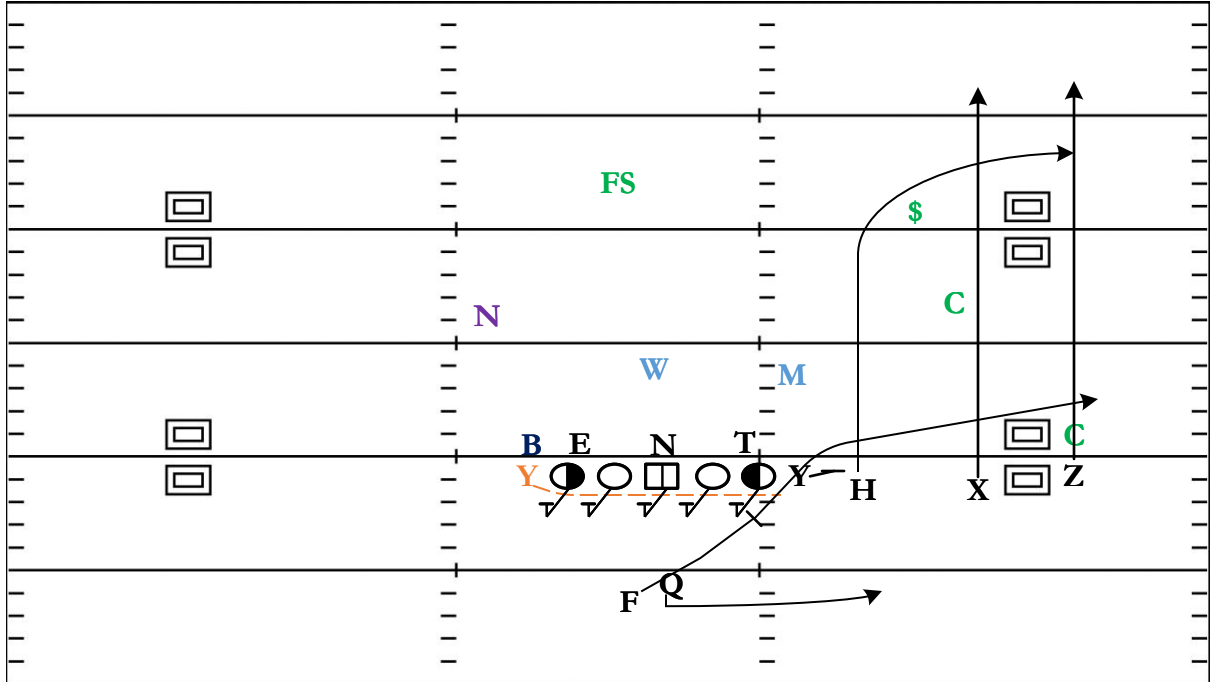
**STRATEGY:** Attack the coverage with four vertical options for the QB stretching the defense thin and isolating the best match-ups.

**QB READS & PROGRESSION:** Single Side Vertical – Chair – Adjuster – Far Side Vertical

X	MOR Vertical If Capped break back towards Sidelines	LT	Slide Protect C-Gap
H	Adjuster MOFO = Take It MOFC = Seam Vertical	LG	Slide Protect B-Gap
Y	Chair Aim for 16 Yards opposite Hash	C	Slide Protect A-Gap
Z	MOR Vertical If Capped break back towards Sidelines	RG	Man Protect 3-Tech Nose
F	Check Protect Stay in Protection & Chip	RT	Man Protect Defensive End

# Trade Quads Attached: Dash Deep Out

QTR	TIME	D & D	YD LINE	HASH	SCORE
3rd	11:00	2 & 2	50	RM	35 - 0



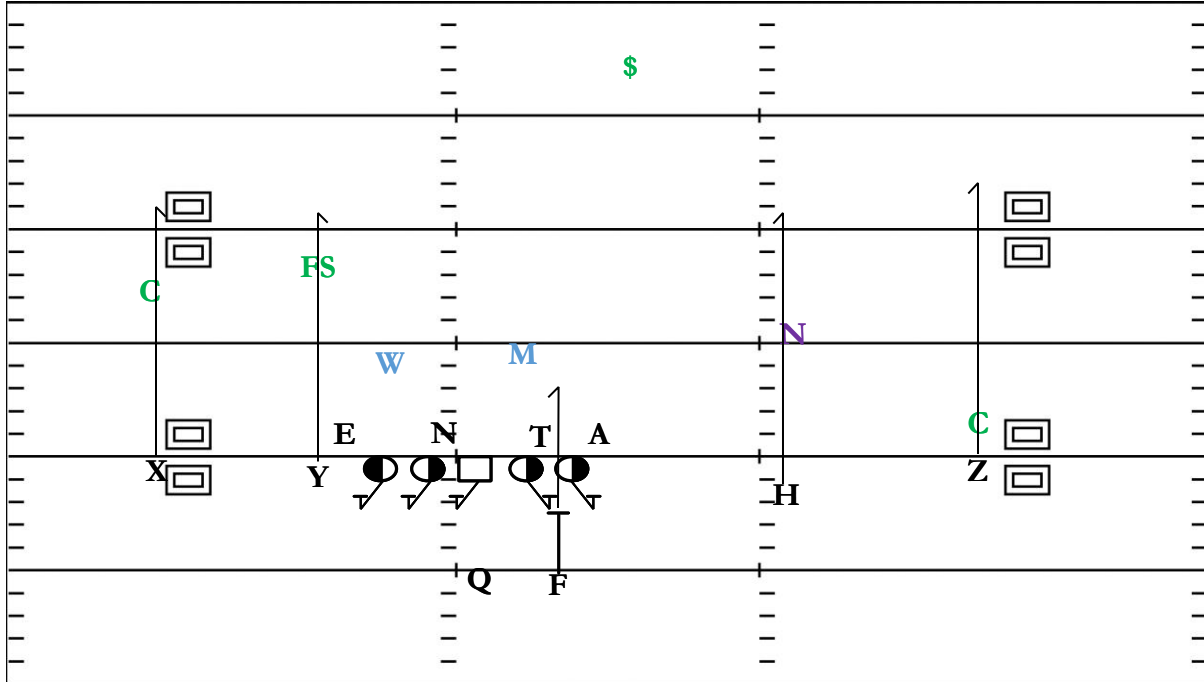
**STRATEGY:** Use the Dash concept to help your Offensive Line and change the Launch Point of the QB. Attack the Boundary w/ a Quads FIB look that floods BND on three levels.

**QB READS & PROGRESSION:** Pause then roll out look Deep out to Arrow

<b>X</b>	Run Off Vertical	<b>LT</b>	Dash Slide Protect To your Left – Try to Pin Defenders
<b>H</b>	Deep Out Break @ 10-12 Yards	<b>LG</b>	Dash Slide Protect To your Left – Try to Pin Defenders
<b>Y</b>	Protect Edge For QB Roll Out	<b>C</b>	Dash Slide Protect To your Left – Try to Pin Defenders
<b>Z</b>	Run Off Vertical	<b>RG</b>	Dash Slide Protect To your Left – Try to Pin Defenders
<b>F</b>	Work tight thru the D-Gap To Arrow	<b>RT</b>	Dash Slide Protect To your Left – Try to Pin Defenders

# 2x2 Open: Deep Stops

QTR	TIME	D & D	YD LINE	HASH	SCORE
1st	12:43	2 & 6	-9	L	0 - 0



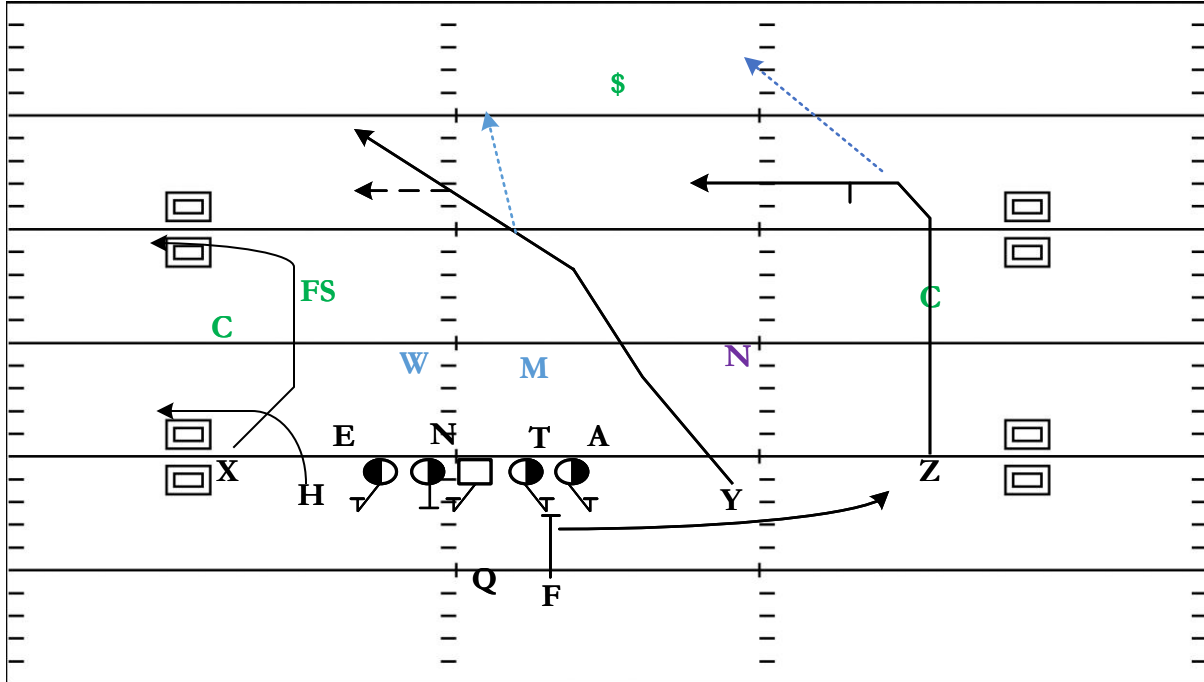
**STRATEGY:** Sell verticals by all four receivers and then stop at 10-12 yards as the defense protects the top of their coverage by working deep. Receivers create their cushion with their sell of vertical.

**QB READS & PROGRESSION:** Field Inside Stop – BND Inside Stop – BND Outside stop

<b>X</b>	Deep Stop Break @10-11 Yards	<b>LT</b>	Slide Protect C-Gap
<b>H</b>	Deep Stop Break @10-11 Yards	<b>LG</b>	Slide Protect B-Gap
<b>Y</b>	Deep Stop Break @10-11 Yards	<b>C</b>	Slide Protect A-Gap
<b>Z</b>	Deep Stop Break @10-11 Yards	<b>RG</b>	Man Protect 3-Tech Tackle
<b>F</b>	Check Protect Mike To TaT Checkdown	<b>RT</b>	Man Protect Anchor

# 2x2 Open: Y-Cross

QTR	TIME	D & D	YD LINE	HASH	SCORE
1st	7:58	1 & 10	26	L	0 - 0



**STRATEGY:** Attach a Smash Concept on the frontside of your Y-Cross, allowing the QB to High/Low the Playside with a Cross and Post Curl working back towards the QB.

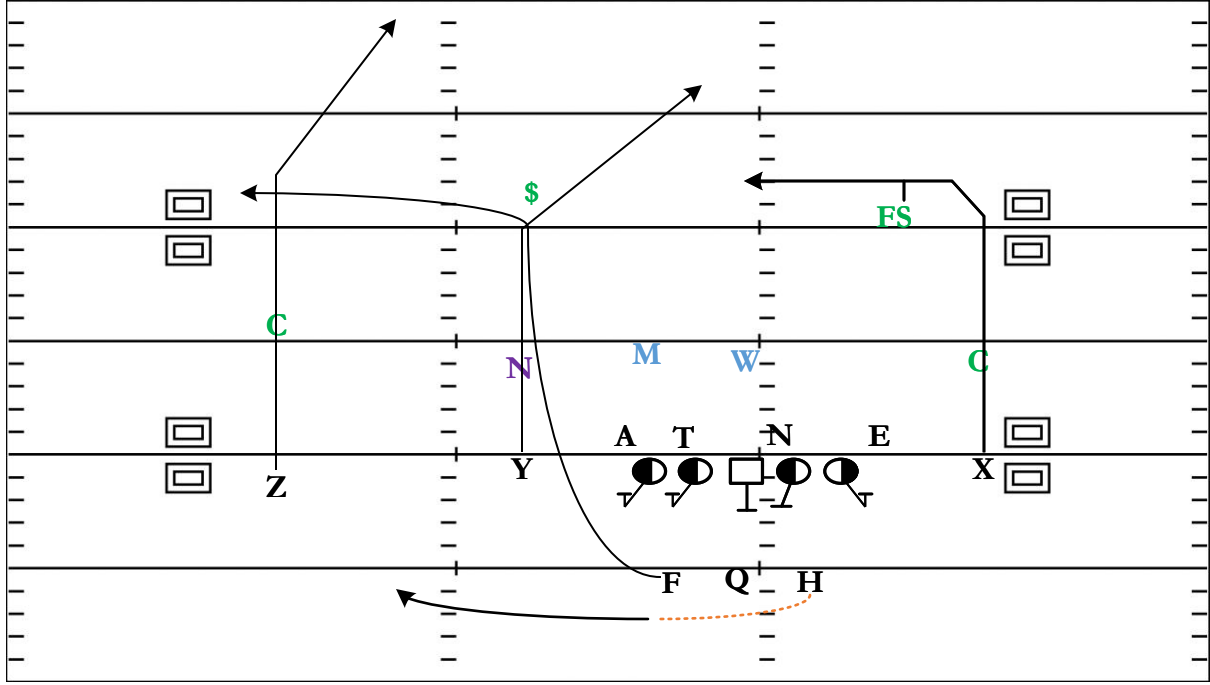
**QB READS & PROGRESSION:** High/Low Smash – Cross – Post Curl - Swing

<b>X</b>	Inside Release Corner	<b>LT</b>	Man Protect Defensive End
<b>H</b>	Short Speed Out Work Off Natural Rub	<b>LG</b>	Clamp Protect 2i Nose to Will
<b>Y</b>	Cross Under #1 / Over #2	<b>C</b>	Clamp Protect 2i Nose to Will
<b>Z</b>	Post-Curl That can be given the option to run the post	<b>RG</b>	Man Protect 3-Tech Tackle
<b>F</b>	Check Protect Mike Swing	<b>RT</b>	Man Protect Anchor



# Split Backs Open H-Ogi: DBL Post RB Chaser

QTR	TIME	D & D	YD LINE	HASH	SCORE
2nd	8:30	1 & 10	48	R	21 - 0



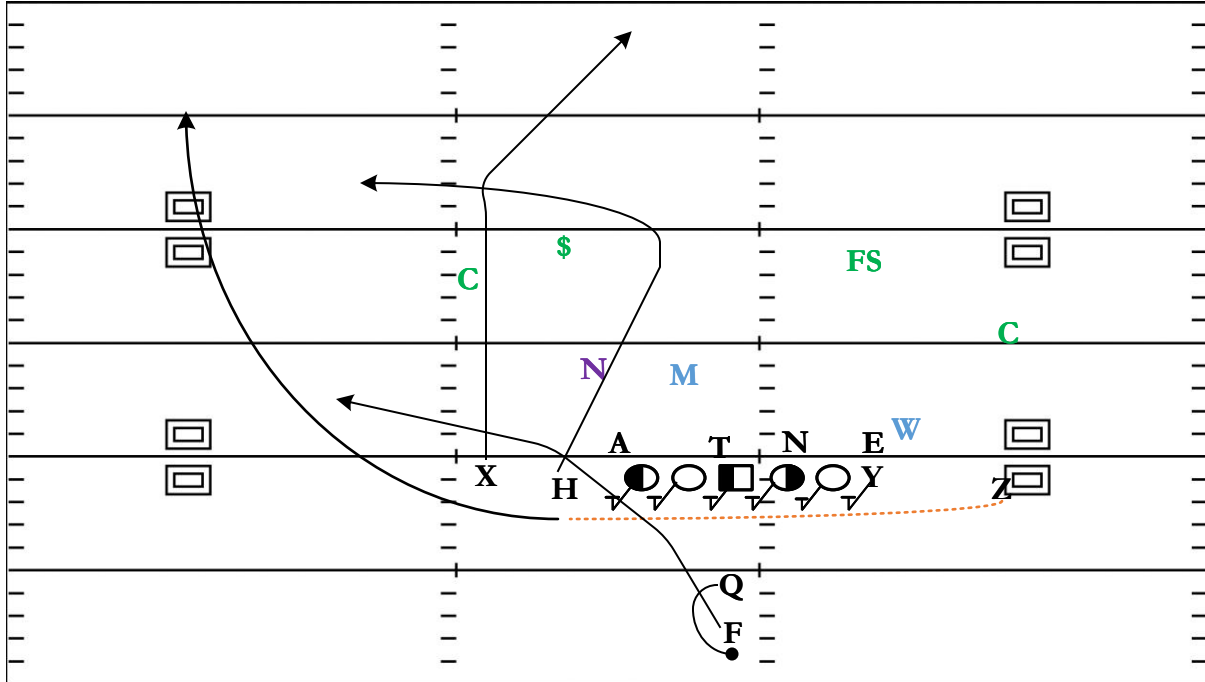
**STRATEGY:** Run the DBL Post Chaser concept but utilize the Runningback as the chaser to create a new dynamic issue for the coverage scheme.

**QB READS & PROGRESSION:** Inside Post – Outside Post – Chaser (Can change depending on coverage and who runs w/ Chaser)

<b>X</b>	Post-Curl	<b>LT</b>	Man Protect Anchor
<b>H</b>	Orbit Motion Swing	<b>LG</b>	Man Protect 3-Tech Tackle
<b>Y</b>	Inside Post	<b>C</b>	Clamp Protect 2i Nose to Will Linebacker
<b>Z</b>	Outside Post	<b>RG</b>	Clamp Protect 2i Nose to Will Linebacker
<b>F</b>	Chaser Sell Wheel then Break underneath The Inside Post	<b>RT</b>	Man Protect Defensive End

## 2x2 Attached Z-Smoke: PAP Post-Wheel SS Chaser

QTR	TIME	D & D	YD LINE	HASH	SCORE
2nd	6:50	1 & 10	-46	R	17 - 3



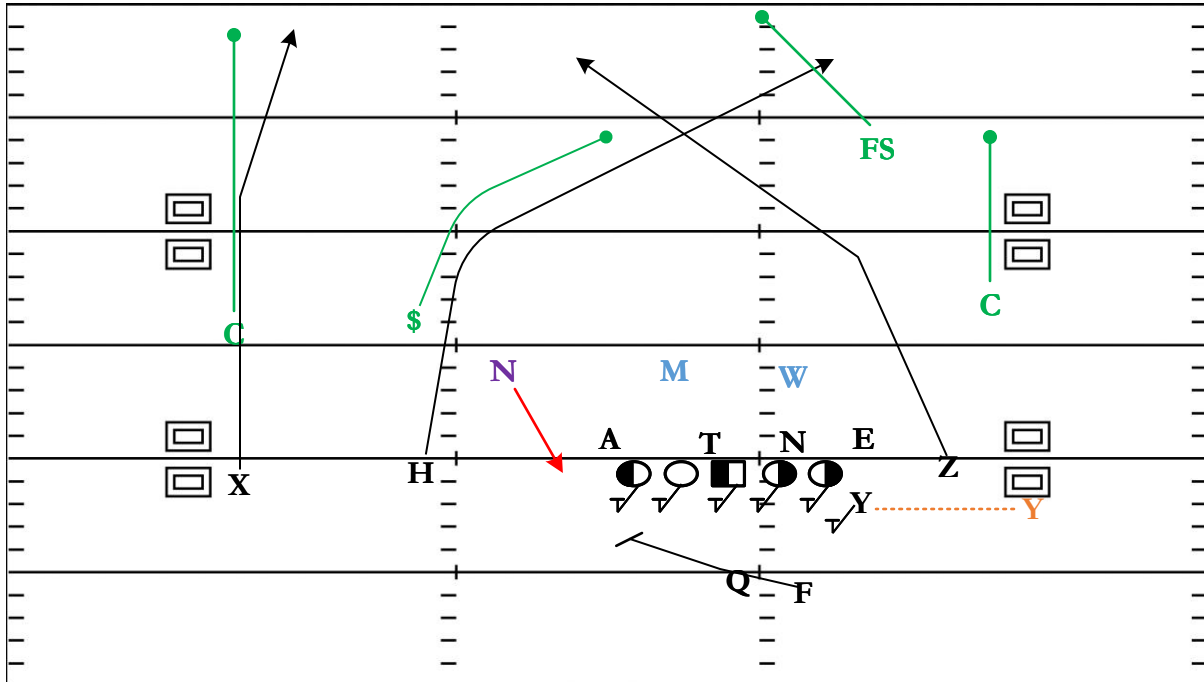
**STRATEGY:** Take a deep vertical shot down the field and pull the defense. Allow your chaser to run underneath your post route as the post route takes the top off the defense.

**QB READS & PROGRESSION:** Post – Chaser – RB Checkdown

<b>X</b>	DBL Move Post	<b>LT</b>	Slide Protect Gap to Left
<b>H</b>	Sail Hard inside then break Underneath Post	<b>LG</b>	Slide Protect Gap to Left
<b>Y</b>	Slide Protect C-Gap	<b>C</b>	Slide Protect Gap to Left
<b>Z</b>	Smoke Motion Wheel	<b>RG</b>	Slide Protect Gap to Left
<b>F</b>	Play-Fake w/ Quarterback Run the Flat	<b>RT</b>	Slide Protect Gap to Left

# Y-In 2x2 Wing: Deep Crosses

QTR	TIME	D & D	YD LINE	HASH	SCORE
3rd	11:18	1 & 10	-42	R	24 - 10



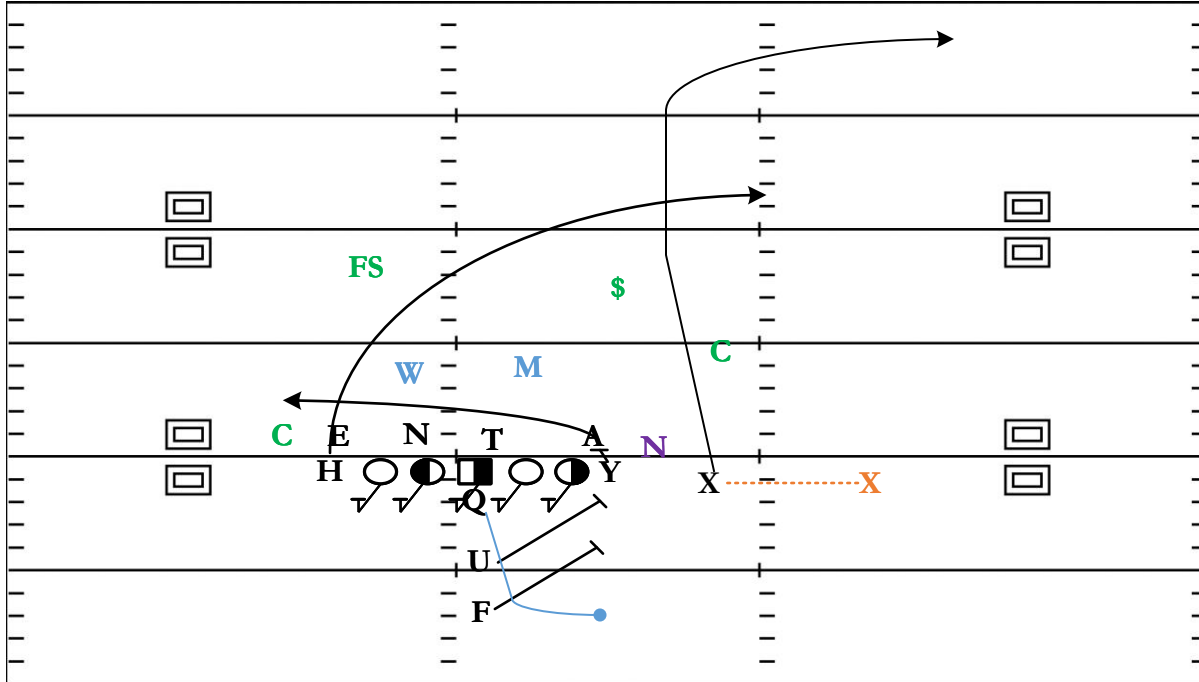
**STRATEGY:** Cross the coverage up by running deep crosses with your Z-Receiver & H-Receiver. Great if the defense struggles with passing off crossers.

**QB READS & PROGRESSION:** Under Cross to Over Cross

<b>X</b>	Skinny Post	<b>LT</b>	Full Slide Protect your Left Gap
<b>H</b>	Deep Under Cross	<b>LG</b>	Full Slide Protect your Left Gap
<b>Y</b>	In Motion Slide Protect C-Gap	<b>C</b>	Full Slide Protect your Left Gap
<b>Z</b>	Deep Over Cross	<b>RG</b>	Full Slide Protect your Left Gap
<b>F</b>	Play-Action to Protect Against Frontside Edge Pressure	<b>RT</b>	Full Slide Protect your Left Gap

# X-In I Ace: Sprint Out TE Leak

QTR	TIME	D & D	YD LINE	HASH	SCORE
1st	9:29	1 & 10	20	L	7 - 0



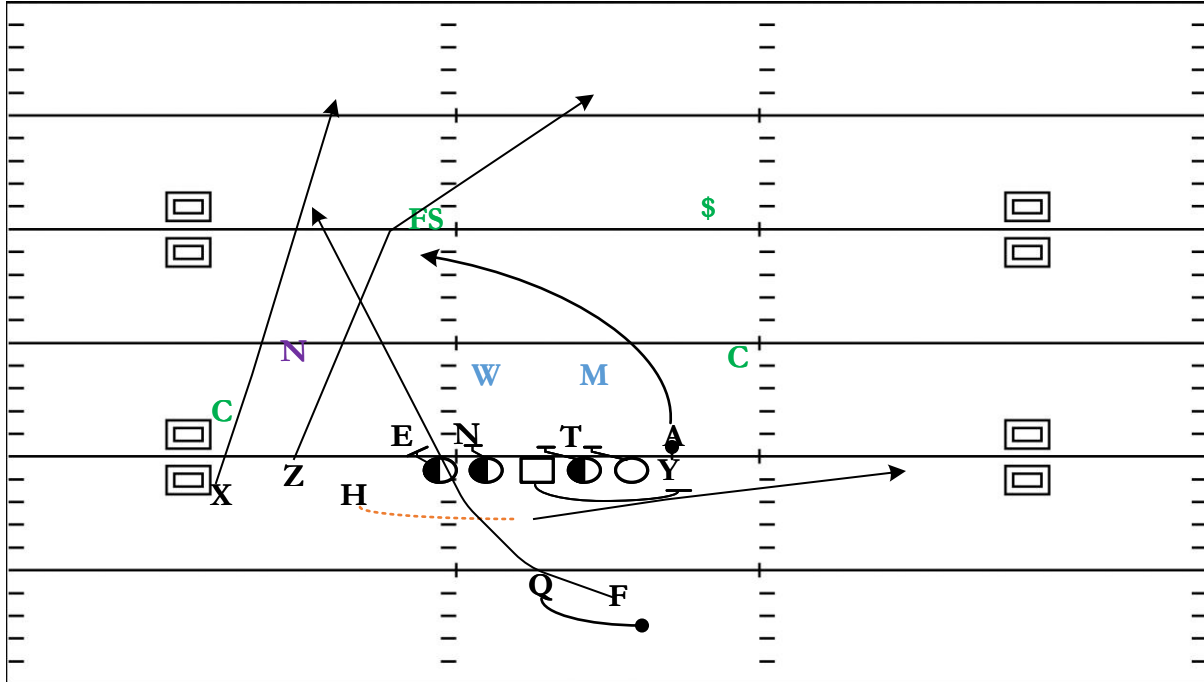
**STRATEGY:** Have hard run action sell out of a heavy personnel grouping, getting the flow going to the Field side and then find your tight end leaking to the back to the boundary side.

**QB READS & PROGRESSION:** Play fake and roll right (sell right) then throw the leak back to the boundary side

<b>X</b>	In Motion Inside Release Deep Out Breaking @ 15 yards	<b>LT</b>	Full Slide Protect Gap to your Left
<b>H</b>	Over Route	<b>LG</b>	Full Slide Protect Gap to your Left
<b>Y</b>	Leak	<b>C</b>	Full Slide Protect Gap to your Left
<b>U</b>	Block-Gap Edge Sell Lead	<b>RG</b>	Full Slide Protect Gap to your Left
<b>F</b>	Play-Action then Protect Edge For Q Roll	<b>RT</b>	Full Slide Protect Gap to your Left

# 3x1 Nub Smoke: RB Backdoor

QTR	TIME	D & D	YD LINE	HASH	SCORE
1st	15:00	1 & 10	-25	LM	0 - 0



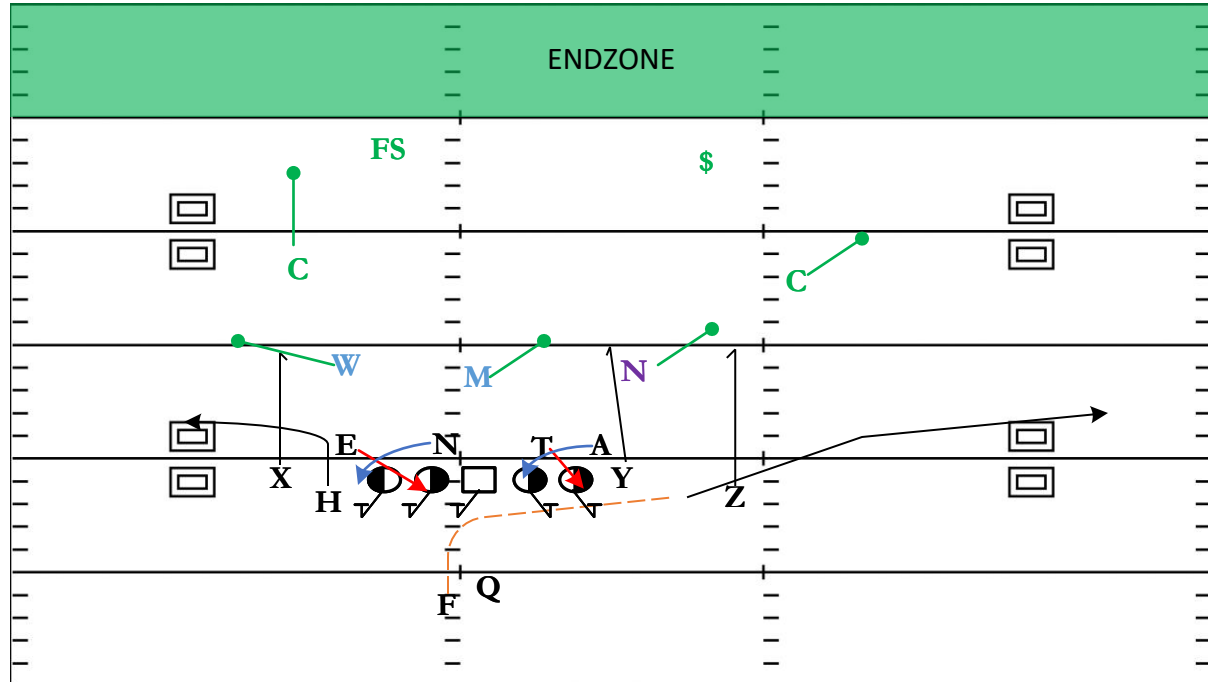
**STRATEGY:** Get the runningback lost in the shuffle as you smoke motion, and play-action w/ a pull towards the Field Side and have the X & Z run off the Coverage.

**QB READS & PROGRESSION:** Play-Action Roll – Inside Vertical – RB Backdoor - Over

<b>X</b>	Run Off Vertical Lean Inside	<b>LT</b>	Aggressive Full Slide C-Gap
<b>H</b>	Smoke Motion Distraction Flat	<b>LG</b>	Aggressive Full Slide B-Gap
<b>Y</b>	Slam Protect Anchor Release to Over	<b>C</b>	Protect Pull To Field C-Gap
<b>Z</b>	Hard Inside Release Vertical	<b>RG</b>	Aggressive Full Slide A-Gap
<b>F</b>	Play-Action Find an Opening Backdoor Route	<b>RT</b>	Aggressive Full Slide B-Gap

# 2x2 Tite F-Out: Spacing BS Stab

QTR	TIME	D & D	YD LINE	HASH	SCORE
1st	9:28	2 & 1	15	L	0 - 0



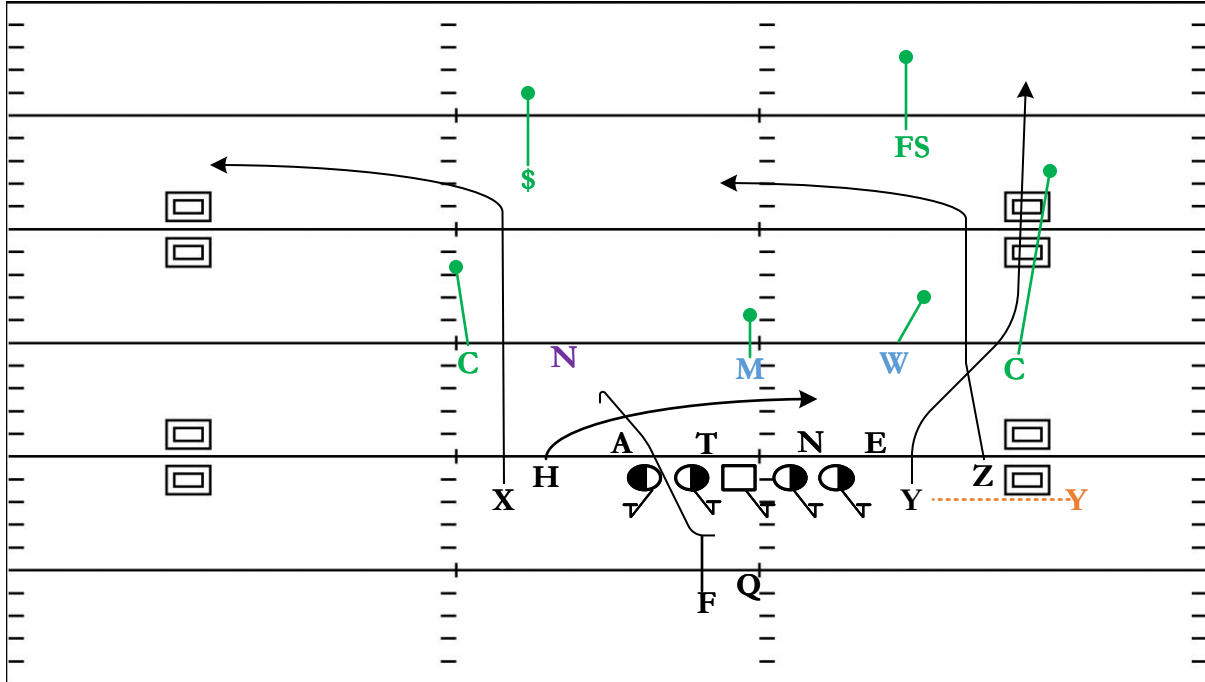
**STRATEGY:** Fast and Easy quick game for your Quarterback as he simply reads away from the Mike Drop. Stab is great against Quarters Variation while Spacing can create issues for Cover 2 or Cover 3.

**QB READS & PROGRESSION:** Arrow – Outside Hitch – Inside Hitch – Read Stab Flat Defender (In & Out Read)

<b>X</b>	Short Hitch	<b>LT</b>	Slide Protect C-Gap
<b>H</b>	Short Speed out	<b>LG</b>	Slide Protect B-Gap
<b>Y</b>	Short Hitch Slightly Inside	<b>C</b>	Slide Protect A-Gap
<b>Z</b>	Short Out	<b>RG</b>	Man Protect 3-Tech Tackle
<b>F</b>	Across Out Motion Arrow	<b>RT</b>	Man Protect Anchor End

# Y-In 2x2 Tite: Glance-Wheel

QTR	TIME	D & D	YD LINE	HASH	SCORE
1st	2:59	1 & 10	-35	R	0 - 14



**STRATEGY:** Give your QB the Wheel in case the defense struggle to pass off or you get a great man coverage match-up. The Wheel threatens the F/S pulling him high. Then the Shallow creates a High-Low for the Glance

**QB READS & PROGRESSION:** Wheel – High-Low the Will w/ the Shallow & Glance - Checkdown

<b>X</b>	Deep Out	<b>LT</b>	Man Protect Anchor
<b>H</b>	Shallow	<b>LG</b>	Man Protect 2i Tackle
<b>Y</b>	Wheel	<b>C</b>	Slide Protect A-Gap
<b>Z</b>	Glance Route Break In at 10-12 Yards	<b>RG</b>	Slide Protect B-Gap
<b>F</b>	Check Protect Nickel to Mike Linebacker Checkdown right outside Tackle Box	<b>RT</b>	Slide Protect C-Gap